

# RE:PORT

**YOUR LOCAL UPDATE FROM THE PORT OF TILBURY**

EDITION TWO 2017



PORT OF  
TILBURY  
LONDON



# IN THIS ISSUE...

*EDITION TWO 2017*

- 00. Welcome
- 01. Career pathways
- 02. Tilbury2 planning process update
- 03. Port of Tilbury Police history
- 04. London Distribution Park - Ecology
- 05. Tilbury on the Thames
- 06. In the community
- 07. Work and training
- 08. Orsett Show 2017
- 09. A little bit of history



# 00. WELCOME TO THE RE:PORT COMMUNITY NEWSLETTER



**CHARLES  
HAMMOND**

**CHIEF EXECUTIVE OF  
FORTH PORTS**



***I am delighted to introduce the latest newsletter to the Thurrock community. The Port of Tilbury is now over 130 years old and continues to thrive as a successful and growing deep sea port and distribution hub for London and the South East.***

The Port of Tilbury employ and support over 4,000 direct jobs within the port complex and Tilbury is the single largest part of the FORTH PORTS Group. There are many exciting and innovative projects which will contribute to the growth and regeneration of Thurrock in the coming decade not least of which is the expansion of the Port through our Tilbury2 project. It is important to us that we play our part in not only fostering good community relations but that we give young people in the area the opportunity to develop a career and a bright future working and living in this expanding borough. Our work in the Logistics Training Academy, our involvement at local schools and our graduate traineeship and apprenticeship programmes are all aimed at fostering this.

It has never been so important to bridge the age gap that divides the generations – there is so much experience in the transport and logistics sector for us to offer our young people but there is much for us also to learn from our young people who are adapting quickly and rapidly to a new digital age which will reshape the logistics sector. Our mentoring programme of young people is only one of the many ways in which we can promote this type of learning.

You will see many examples in this newsletter of our total involvement in the community and our commitment to ensuring that Thurrock has a prosperous and successful future.

# 01. CAREER PATHWAYS



The Port of Tilbury was honoured to host 'Opportunity Thurrock' for the second year running in our historical London Cruise Terminal.

The inspirational event brings over 120 exhibitors to the port to highlight to thousands of young students from the local area the various pathways that are open to them as they consider their next step on their career journey. The Port is a major employer in the local area and we place significant importance on attracting and recruiting young people locally and organically developing their skills and retaining them through apprenticeship routes through our own Training Academy. Opportunity Thurrock is a successful partnership between Thurrock Council and all of the borough's educational institutions to inspire young people as to the many options available to them.



## CHRISTOPHER JOHNSTON

### GRADUATE

Christopher was brought onto the team in March this year after leaving university. Having originally applied for the Operations Graduate role, he was chosen for the Tilbury2 project.

Directly involved in the Tilbury2 project, Christopher's main responsibility is the 'Consultation Report', which is a major part of the Development Consent Order for Tilbury2.

Christopher grew up in Essex, but left to study his Bachelors degree in English Literature from the University of Reading. He then completed a master's degree before coming to work for the Port of Tilbury.

# 02. TILBURY2 PLANNING PROCESS UPDATE

The Port of Tilbury, London's major port, has now completed the statutory consultation process which invited views from the surrounding communities and statutory consultees on its proposals to build a new port terminal, TILBURY2, on the Thames close to the current port. TILBURY2 will be built on a 152 acre site which was part of the former Tilbury Power Station and will include a new deep water jetty in the River Thames.

The statutory process closed on 28th July 2017 and was part of the second stage of seeking views from communities and key stakeholders. The Port will now further develop the scheme in light of all the feedback received before submitting a formal application for a development consent order (DCO) to the Planning Inspectorate (acting on behalf of the Secretary of State for Transport) in the Autumn of this year.

Peter Ward, Commercial Director at the Port of Tilbury said:

*"As a major employer in the community, it is important to us that we consulted as many people as possible during both the non-statutory and statutory periods over the past few months. We have had a lot of feedback via our events and the website and we will now develop our proposals for the new port into a formal application which we will submit in the Autumn. We are one of the largest ports in the South East and our customers are looking for expansion opportunities. TILBURY2 is a part of the port's overall investment strategy to achieve this."*

*All the feedback submitted through the public events and the website is being collated into a full report on the consultation process and will form part of the formal application.*





## 03. PORT OF TILBURY POLICE HISTORY

The Port of Tilbury Police is the last remaining force of the oldest professional Police Force in England. From the formation of the West India Dock Company Police in 1802 (some 27 years before the Metropolitan Police came into being), through the amalgamation under the PLA (Port of London Authority Police in 1909) to the formation of the Port of Tilbury (London) Police in 1991 they have existed, in one form or another, for over 200 years. Throughout the last 215 years Police officers have policed the docks along the Thames and at its height was the fourth largest force in the country.

Today the Port of Tilbury Police consists of fifteen warranted officers who are privately funded by Forth Ports. They are fully trained to Home Office Standards receiving their initial training alongside Essex colleagues with whom they maintain a close working relationship, regularly assisting them responding to emergency calls within the Tilbury area. Policing in a port environment is incredibly varied, exciting and ever changing as the port expands. Past policing traditions are upheld but the modern Tilbury Port Police have moved to a community policing style where officers have specific responsibility for designated beats which has enhanced visibility and community engagement.



FIND THE PORT OF TILBURY POLICE AT: [TWITTER.COM/POLICE\\_POTLL](https://twitter.com/POLICE_POTLL)



# 04. LONDON DISTRIBUTION PARK - ECOLOGY



***London Distribution Park (LDP) so far has been very successful in the creation of new habitats for water voles in the ditches around the site area.***

Contractors working on the Amazon building site brought this good news story to light while they were undertaking works in a number of new drainage ditches at the site. When the contractors checked the ditches before starting the work, they discovered a large number of water voles that had previously occupied the drainage ditches along the A1089, were now present at the Amazon site.

To ensure the safety of the water voles as the works continued, the voles were captured and homed safely over the winter months until the ditches were completed. The voles have now been released back into the ditches this summer and will now be settled back into the environment that has suited them so well.

The water vole was famously brought to life in the character of Ratty in the 1908 classic children's story, 'The Wind in the Willows'. At this time water voles were common on every river and stream in Essex but a century on they occupy only 5% of their original territory.

It's good to know that the mitigation work on the London Distribution Park has helped provide a habitat that has encouraged the water voles to thrive in our local environment.

***"What good is poetry when everybody's moving on? Hm - everyone but me. And to think, a road goes past my very door, and I only know a mile or two of it."***

Ratty, Wind in the Willows by Kenneth Grahame

# LATEST NEWS



*The demolition of the chimneys by RWE nPower at Tilbury Power Station on 28th September 2017. These chimneys have stood tall over the Thames for 40 years.*

- **Largest Cruise Liner**

The giant Mein Schiff 3 cruise liner sailed into the London Cruise Terminal in Tilbury on 12th September as part of a 7 night European cruise. The 293 metre ship, owned by TUI Cruises, is the largest cruise liner that the terminal has welcomed with an incredible 2,700 passengers disembarking for sight-seeing trips around London and the local area.

- **Cruise and Maritime Voyages launched its new ship, Columbus in June**

TV presenter Angela Rippon led the ceremony at the Cruise Terminal in Tilbury.

- **Transport Minister visits Tilbury for briefing on Port's £1BN investment programme at the London Distribution Park and Tilbury2.**

- **London Resort Company Holdings set to partner with Port of Tilbury to help build Global Entertainment Resort in North Kent.**

- **The Port of Tilbury unveiled its plans to reinvigorate its rail offering at the latest Rail Freight Group conference hosted at Orsett Hall in June.**

- **Port of Tilbury gives away Orsett Show tickets to local young writers**

The Port of Tilbury gave away 61 pairs of Orsett Show tickets to creative young people in the local communities who entered a writing competition.

- **Tilbury on the Thames Trust will launch its new project, 'Attention to Logistics' in October**

[www.tott.org.uk](http://www.tott.org.uk)

- **Glass cullet rides the rail from The Port of Tilbury**

The Port of Tilbury, London's major port, and URM UK loaded their first train of bulk glass cullet processed from a new recycling facility at the port in September.

- **Elite Dance Academy and Port of Tilbury officially open new kids play park**

Young dancers from Elite Dance Academy officially opened a new play park in Tilbury called 'Athlone Park' on 1st September. The kids were joined by the team from the Port of Tilbury who funded and created the park.



# 05. TILBURY ON THE THAMES TRUST

## HERITAGE LOTTERY FUND PROJECT 'LAYING THE KEEL'

Tilbury on the Thames Trust was established in 2016 and has subsequently developed a vision for the Grade II\* Tilbury Cruise Terminal Complex. The Trust now plans to lay the foundations for delivery by building a better understanding of our heritage and its ability to accommodate that vision of combining community and commercial use in this wonderful local asset on the Thames.

Tilbury on the Thames Trust have been delighted to receive £79,800 from the Heritage Lottery Fund and £5,000 from the Port of Tilbury to identify how best to restore our historic buildings and develop our Trust to support future fundraising. This will include a range of community activities to help shape the plans.

By focussing on our heritage and organisation, 'Laying the Keel' will increase our capacity to achieve strategic change to fulfil our vision:

*"We will restore and celebrate the Grade II\* Cruise Terminal complex, an architectural gateway on the Thames with cultural significance for trade, military and migration. Working collaboratively with the Port of Tilbury, we will blend community and commercial uses to safeguard the heritage for the future. Local people will form part of our story through leisure and education opportunities that anchor the Cruise Terminal Complex within our community, whilst positioning it as a tourism hub for the wider region."*



The Attention to Logistics project launched in October and will establish a bursary scheme and create training facilities specifically targeted at the veteran community, helping ex-service and their families back into work in the logistics sector. Delivered by Tilbury on the Thames Trust in association with the Port of Tilbury Logistics Academy and the Royal British Legion, the bursary and facilities will create tailored opportunities for veterans to develop their skills and potential. With the Port of Tilbury expanding and significant warehouse investments being made in the Thames Gateway, the number of jobs in the Port alone is projected to increase from 3,500 to 9,000. The Attention to Logistics Programme will create improved pathways to these new opportunities for veterans whose military service make them well suited for careers in logistics.

For more information go to:  
[WWW.TOTT.ORG.UK](http://WWW.TOTT.ORG.UK)

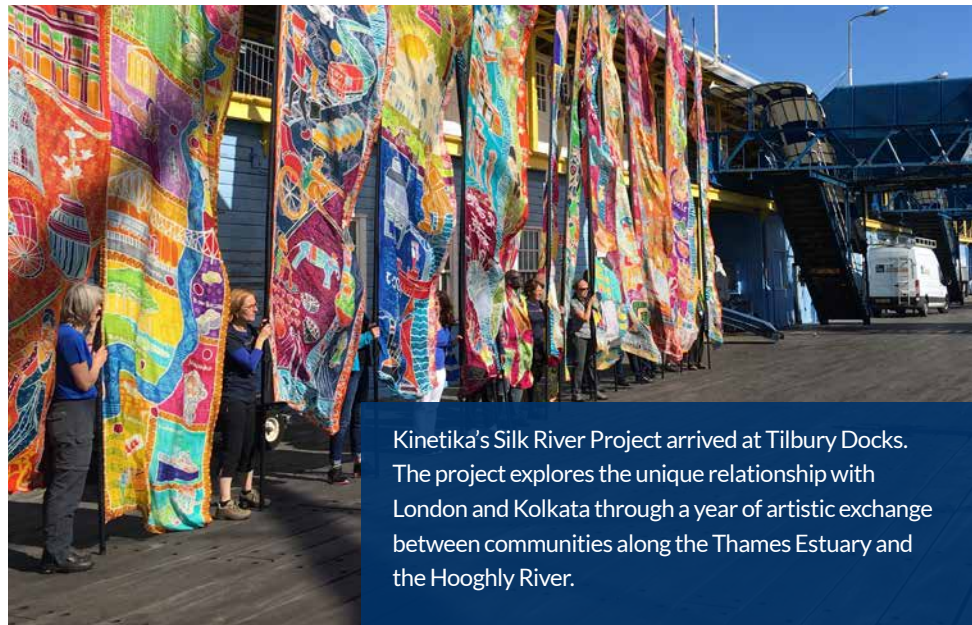
# 06. IN THE COMMUNITY

A great day at the Family Festival on the Anchor Fields in Tilbury.

Thank you to everyone who took part in our penalty shootout competition with Star Sports Soccer and went home with one of our very special Port of Tilbury Footballs!



Elite Dance Academy officially opened a new play park in Tilbury called Athlone Park. Peter Ward, Commercial Director said: ***“There is nothing better than the sound of children having fun and this new park in Tilbury was a big hit with the kids at the opening.”***



Kinetika's Silk River Project arrived at Tilbury Docks. The project explores the unique relationship with London and Kolkata through a year of artistic exchange between communities along the Thames Estuary and the Hooghly River.





Port of Tilbury gave away over 60 tickets to the Orsett Show to local young writers.

Paul Dale, Asset and Site Director said: *"We have enjoyed reading all the entries and it's very impressive to see such a high quality response from young people in the community."*



Amazing work of the Tilbury Needlework Group.

*"It's people like Gwen and the team of ladies in the group that make the Tilbury community a special place and we hope our contribution will help the needlework group to continue their fantastic work that they do for the children in the Hospice and their families."*



The Port of Tilbury donated £250 to 'Contact the Elderly' to support their wonderful tea parties.



# 07. WORK AND TRAINING

## PORT OF TILBURY HELPING YOUNG LEARNERS TO BECOME READY FOR WORK

Working in partnership Thurrock Council, HDS and the Port are working with young unemployed candidates to help them improve their basic skills and gain valuable work experience.

Getting into a job can be a daunting experience for some of our young candidates, who may feel they have significant barriers to overcome.

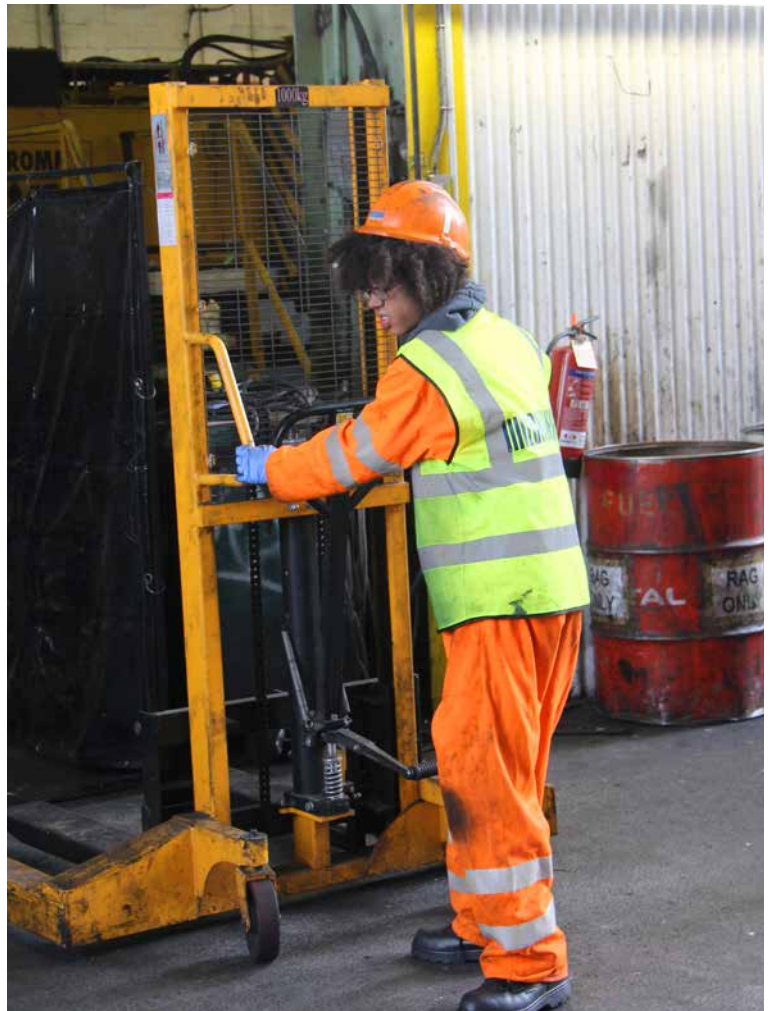
The Port's logistics academy works on a one to one basis to identify and support them with any issues they have in getting into work.

The course has been designed to individual needs to build confidence and provide preparation for and progression into apprenticeships and employment.

For those candidates who are not ready to go into work we identify a route for their personal progression, this could be through further training or specialist support.

Many of the candidates have never considered the logistics industry before and it has been great to promote the wide variety of jobs there are on offer in the port and the career path it could lead to.

At the Port, we know the importance of working with local communities, ensuring that our young people are fully informed of the job opportunities on their doorstep.



# 08. PORT OF TILBURY MAIN SPONSORS OF THE ORSETT SHOW 2017



The Port of Tilbury, London's major port, was the headline sponsor for the 2017 Orsett Show that was held on 2nd September. The Orsett Show is an annual event held in the village of Orsett and 2017 sees the Show celebrating its 111th year. Despite the passage of time, the Show remains true to its roots with the aim of promoting countryside matters in the 21st Century.

Paul Dale, Asset and Site Director, Port of Tilbury said:

*"It was a wonderful day at the Orsett Show in the sunshine at the weekend. We were proud to be part of the event and loved meeting all the people who visited our stand. The Port is very much part of the local community and we are thrilled to be confirmed as the headline sponsors of the show for the next two years."*



# 09. A LITTLE BIT OF HISTORY

*In 1854, the Tilbury Riverside station was built as part of the 'London Tilbury and Southend Railway' developments. The station included a landing stage facility, which allowed rail passengers to join board the Gravesend Ferry or passenger's liners for more distant journeys. In 1886, a new dock was built after it was realised that a dock built downstream would be increasingly efficient for cargo boats.*

The number of passengers coming through Tilbury Docks was increasing after the First World War. It was soon decided that Tilbury would become the centre of passenger operations for London. 1922 saw the passing of a bill in parliament to build a passenger landing stage at Tilbury.

Due to Tilbury's close proximity to London, the landing stage saw countless celebrities, including the England Cricket Team on their journey to tour Australia, pass through.

The railway station was closed on the 30th November 1992. However, this did not signal the end of the station's life.

In June 2017 the work started on the former Tilbury Riverside Station, to overhaul and refurbish the Grade II\* listed building and return it to its former 1930's glory. Once completed it will be used as a large community space for events, a baggage reclaim/handling hall for the London Cruise Terminal, an extension for the Port of Tilbury Training Academy and a filming location for TV and movie scenes. One highlight includes the filming of the blockbuster 'Wonder Woman' starring Gal Gadot, shot on the banks of the river.

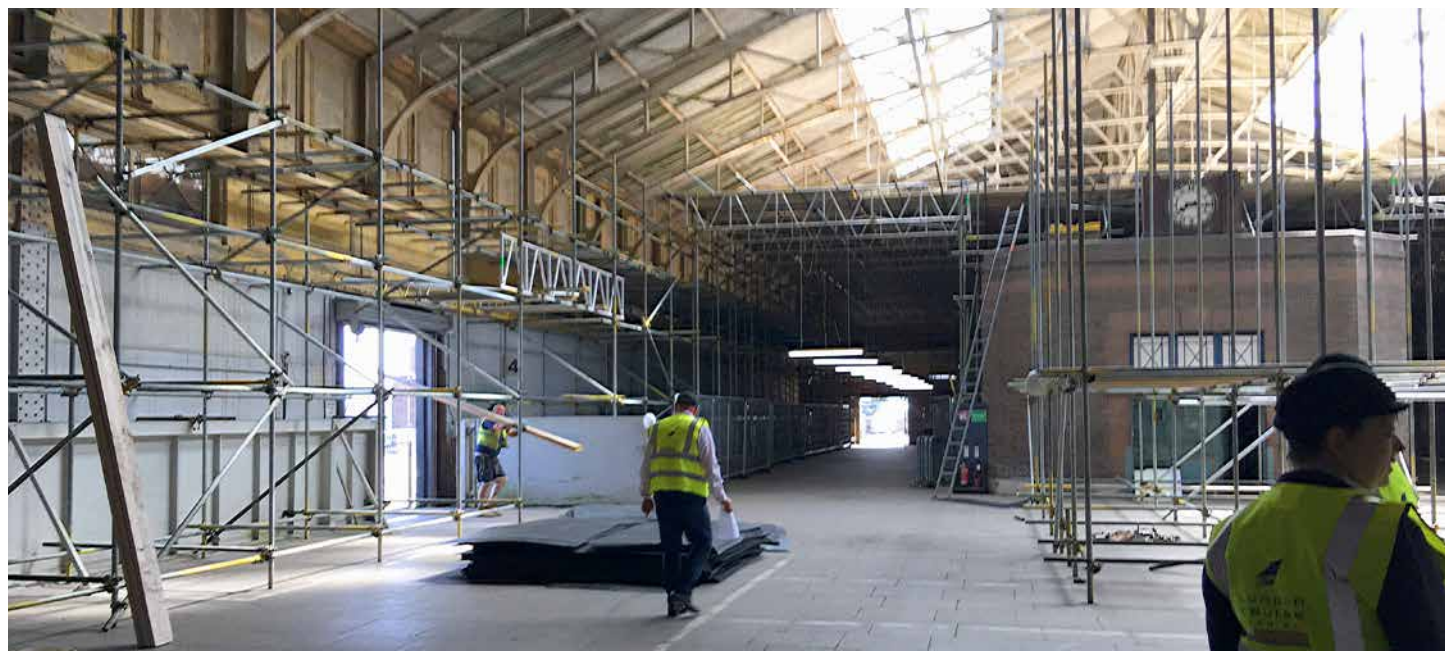


## TILBURY RIVERSIDE PROJECT

Port of Tilbury funds the Tilbury Riverside Project. If you would like to find out more about our local history and the work the Tilbury Riverside Project does in the Tilbury community, please go to:

[tilburyandchadwellmemories.org.uk](http://tilburyandchadwellmemories.org.uk)







When you have finished with  
this item please recycle it.



**@FORTHPORTS**  
**WWW.FACEBOOK.COM/FORTHPORTSCOMMUNITY**

**WWW.FORTHPORTS.CO.UK**  
**WWW.TILBURY2.CO.UK**