



# CRAIGLEITH

## HIGH-PERFORMANCE AZIMUTH STERN DRIVE TUG

### GENERAL

Classification	Bureau Veritas I*HULL*MACH Fire-fighting Escort Tug - Unrestricted Navigation
Flag	British
Owner	Forth Estuary Towage
Built	2017
Fire-Fighting	Full FiFi 1 (2800 m3/hr)

### DIMENSIONS

Length overall	28.2m
Beam overall	12.6m
Max Draught	5.52m
Gross tonnage	461t

### PERFORMANCE

Bollard pull ahead	72t
Bollard pull astern	70.91t
Max Speed	13.2 kn

### PROPULSION SYSTEM

Main engines	MTU 16V 4000 M63
Total power	4000kw (5364bhp) at 1800rpm
Azimuth thrusters	Schottel SRP 1515 FP Rudderpropeller
Propeller diameter	2700mm

### TANK CAPACITIES

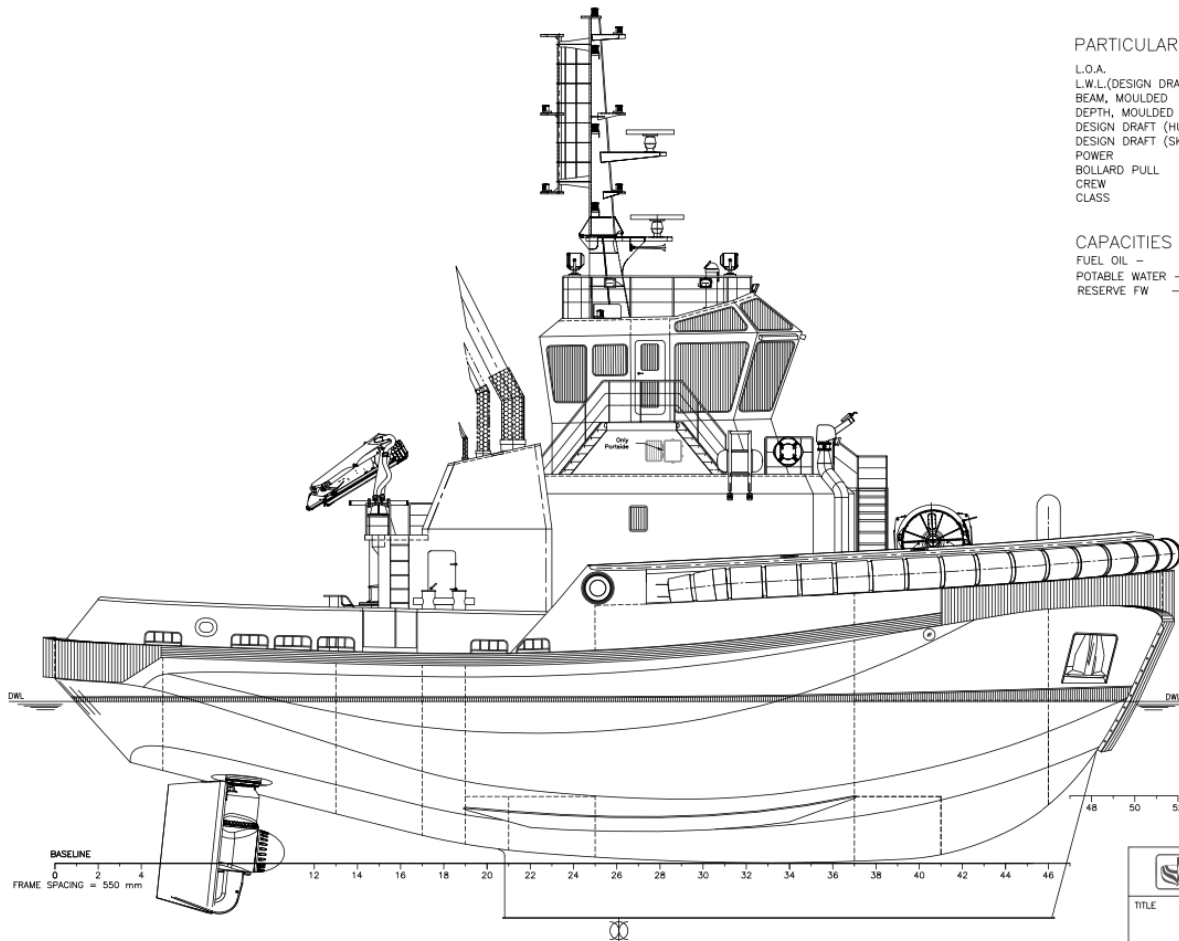
Fuel Oil	111.00 m3
Fresh Water	13.50 m3
Foam	4.10 m3
Ballast Water	35.80 m3

### AUXILIARY EQUIPMENT

Generator sets	2 x Caterpillar C4.4 TA, 230/400 V, 107 kVA, 50 Hz
----------------	--

### DECK EQUIPMENT

Fore Winch	DMT TW 020-300kN Hydraulic driven escort winch 175t brake holding force. Split independent drums
Tow Hook	Data Hydraulic DTH 100-151P
Capstan	5t Hydraulically driven



# PARTICULARS

L.O.A.	28.2 m
L.W.L.(DESIGN DRAFT)	26.74 m
BEAM, MOULDED	12.6 m
DEPTH, MOULDED	5.3 m
DESIGN DRAFT (HULL)	4.12 m
DESIGN DRAFT (SKEG)	5.52 m
POWER	2 x 2000 kW
BOLLARD PULL	70 TONNES
CREW	8 PERSONS
CLASS	ABS, A1, AMS, ABCU, TOWING VESSEL UNRESTRICTED SERVICE, UWILD FI-FI 1 (READY)

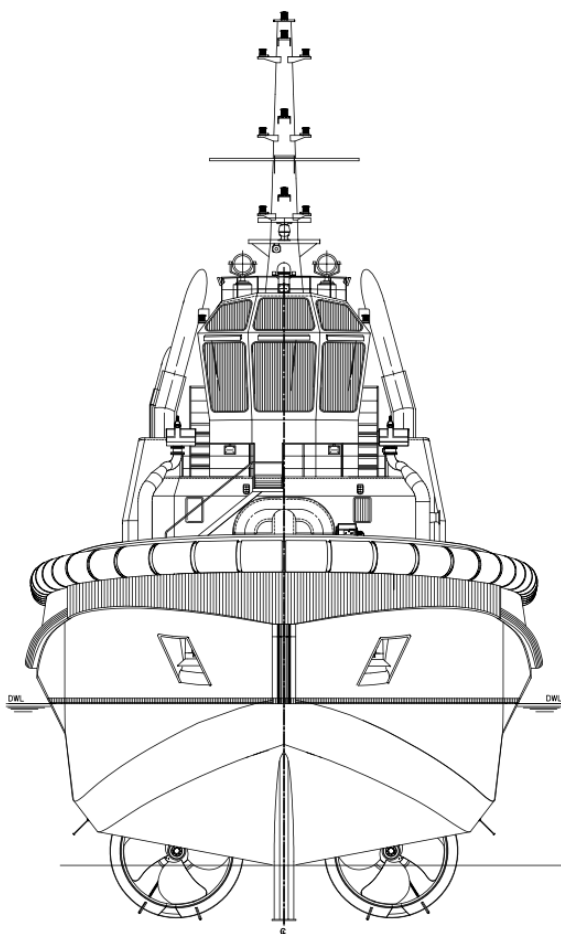
## CAPACITIES

FUEL OIL -	111,000 L
POTABLE WATER -	13,500 L
RESERVE FW -	35,800 L

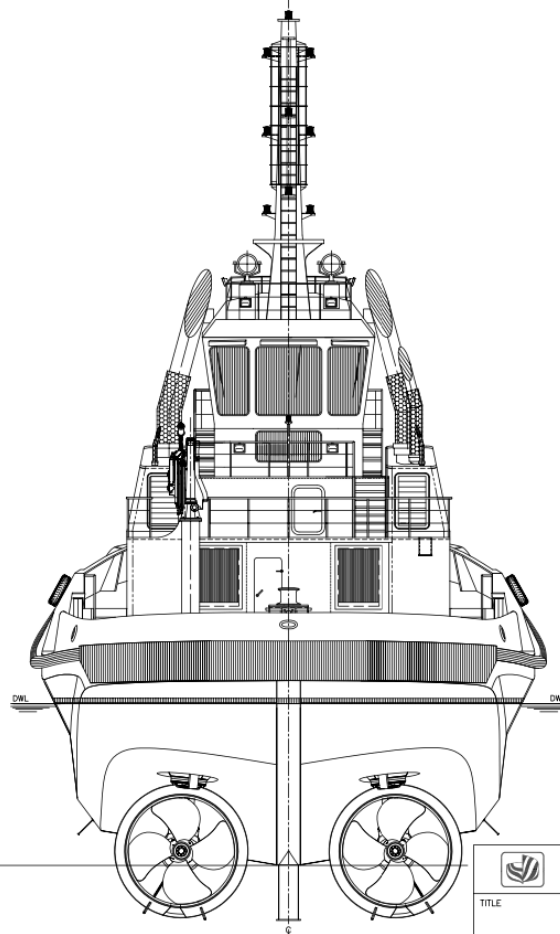


**ROBERT ALLAN LTD.**

TITLE GENERAL ARRANGEMENT TERMINAL XXI, H91			
SCALE 1:100	DATE AUG. 5/15	PLOT SIZE ANSI B	SHEET 2 OF 5
PROJECT No. 215-046	DRAWING No. 30000	REV. 16	



FWD VIEW

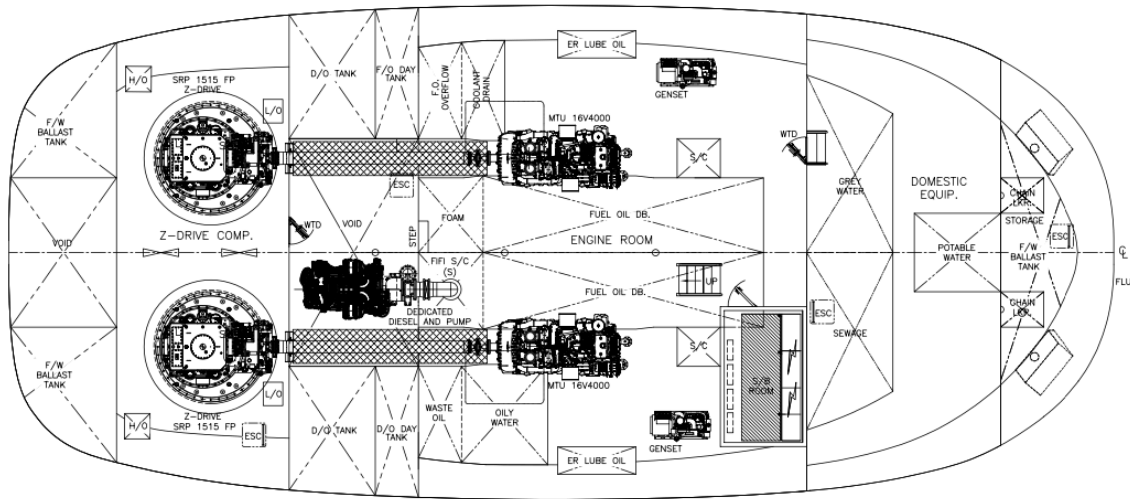


AFT VIEW

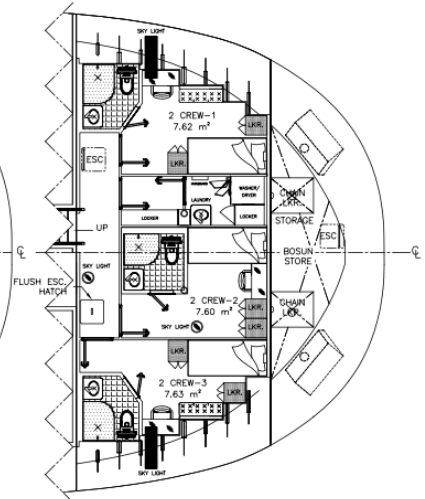


**ROBERT ALLAN LTD.**


TITLE GENERAL ARRANGEMENT TERMINAL XXI, H91			
SCALE 1:100	DATE AUG. 5/15	PLOT SIZE ANSI B	SHEET 5 OF 5
PROJECT No. 215-046	DRAWING No. 30000	REV. 16	

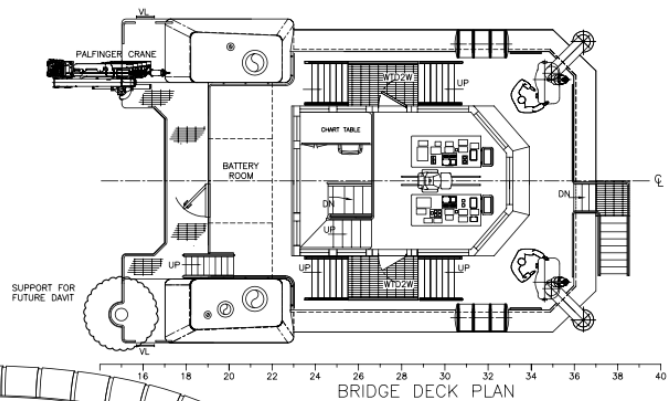


REFERENCE LINE  
0 2 4 6 8 10 12 14 16 18 20 22 24 26 28 30 32 34 36 38 40 42 44 46 48 50 52  
HOLD PLAN

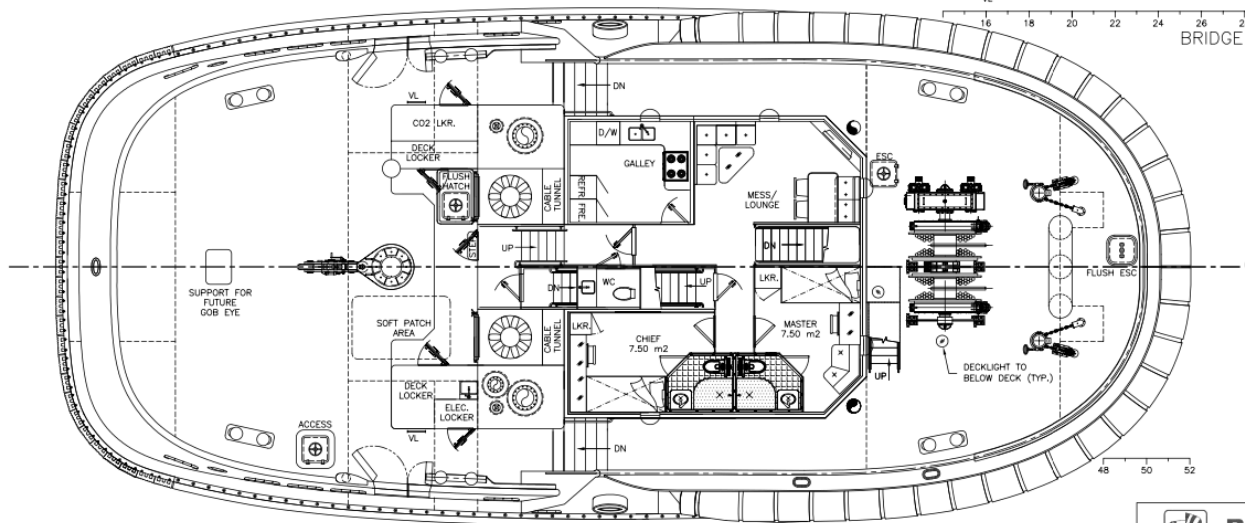


LOWER ACCOMMODATION PLAN

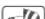
 <b>ROBERT ALLAN LTD.</b>				
TITLE GENERAL ARRANGEMENT TERMINAL XXI, H91				
SCALE 1:100		DATE AUG. 5/15	PLOT SIZE ANSI B	SHEET 4 OF 5
PROJECT No. 215-046		DRAWING No. 30000	REV. 16	



BRIDGE DECK PLAN



REFERENCE LINE  
0 2 4 6 8 10 12 14 16 18 20 22 24 26 28 30 32 34 36 38 40 42 44 46 48  
FRAME SPACING = 550 mm

					<b>ROBERT ALLAN LTD.</b>														
TITLE										GENERAL ARRANGEMENT TERMINAL XXI, H91									
SCALE					DATE					PLOT SIZE					SHEET				
1:100					AUG. 5/15					ANSI B					3 OF 5				
PROJECT No.					DRAWING No.										REV.				
215-046					30000										16				