

FIRTH OF FORTH

PASSAGE PLANS



# Inward and Outward Passage Plans For the Firth of Forth within the Firth of Forth Pilotage Area.

*This plan has been prepared with the co-operation of personnel from The Association of Forth Pilots and Forth Ports Limited.*

**Not to be used for navigation.**

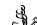
For compulsory pilotage areas see [Pilotage Direction No.8.](#)

Legislation, Procedures and Guidelines are available online at: <http://www.forthports.co.uk/marine/> this is a general passage plan for routing to from various ports and terminals on the firth of forth.

## Contact Information:

 Forth Navigation	VHF Channels 71(working)
 Grangemouth Locks	VHF Channel 14
 Leith Harbour/Leith Locks	VHF Channel 12
 Forth Pilots & Pilot Boat	VHF Channel 72

## Telephone:

 Forth and Tay Navigation Service	+44(0)1324 498584
 Forth Pilots	+44(0)131 552 1420

## Address:

Forth & Tay Navigation Service (FTNS)  
South Shore Road Grangemouth  
FK3 8TQ

The Passage Plan's contained in this booklet are merely a recommendation of the preferred route to be taken by vessels when navigating in the indicated areas. Any Pilot or Master should exercise their own discretion and be prepared to depart from the Passage Plan when circumstances dictate. Forth Ports Ltd shall not be liable for any losses, liabilities or damages arising whether or not due to any form of reliance on or usage of any Passage Plan or deviation thereof.

<b>FORTH PORTS LIMITED</b>	<b>Document ID</b> FP PMSC F16_03	<b>Authorised By</b> MCM	<b>Original Date</b> January 2015
<b>Forth Passage Plan</b>	<b>Date Revised</b> August 2022	<b>Revised By</b> MCM	<b>Review Due</b> August 2024

NOT FOR NAVIGATIONAL USE.

Report to FTNS at Fairway Buoy(VHF 71)

Strong Tides Between Buoys No.5 and No.6

263°T/083°T 5.1NM

272°T/092°T 3.1 NM

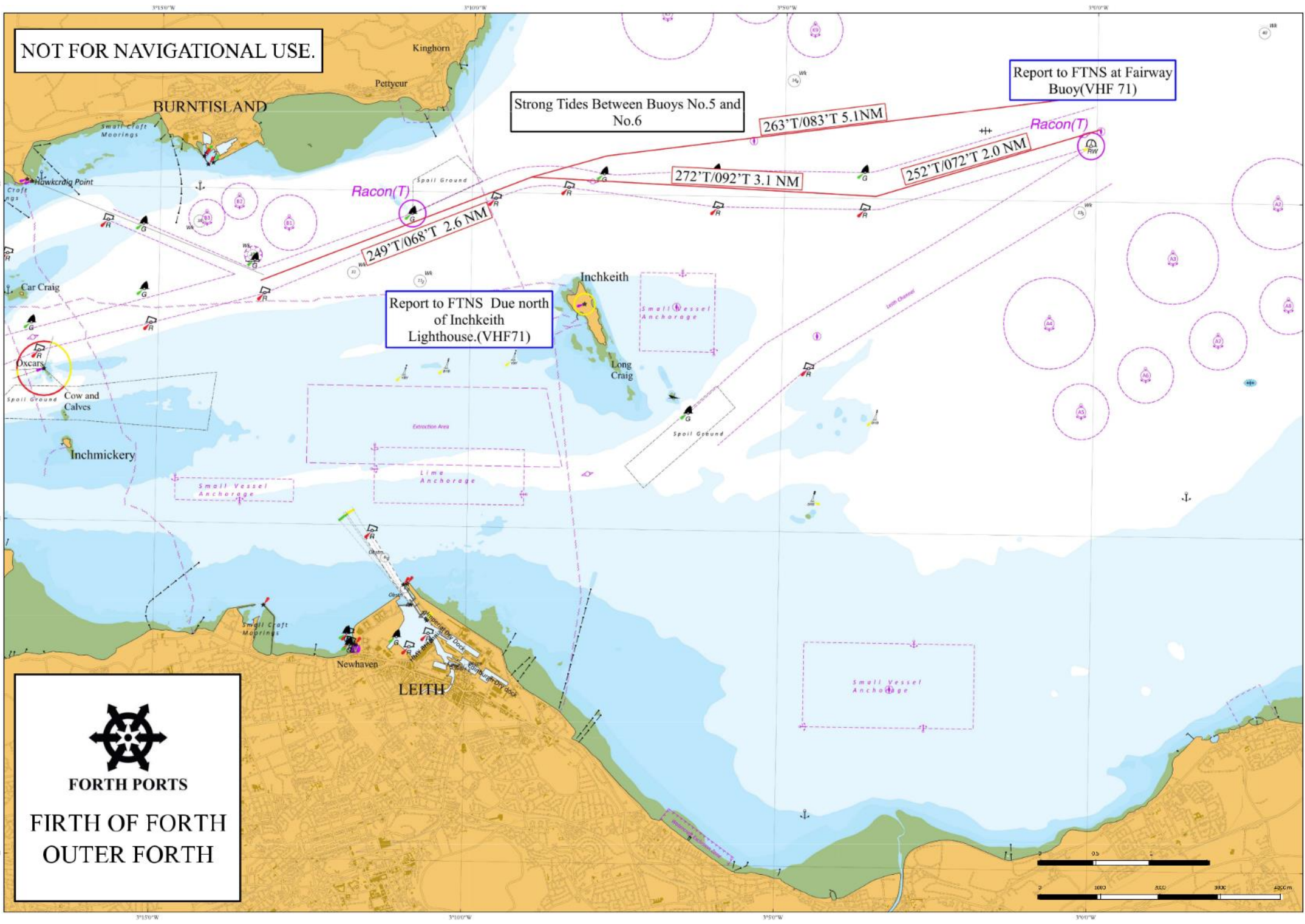
252°T/072°T 2.0 NM

Racon(T)  
249°T/068°T 2.6 NM

Report to FTNS Due north of Inchkeith Lighthouse.(VHF71)

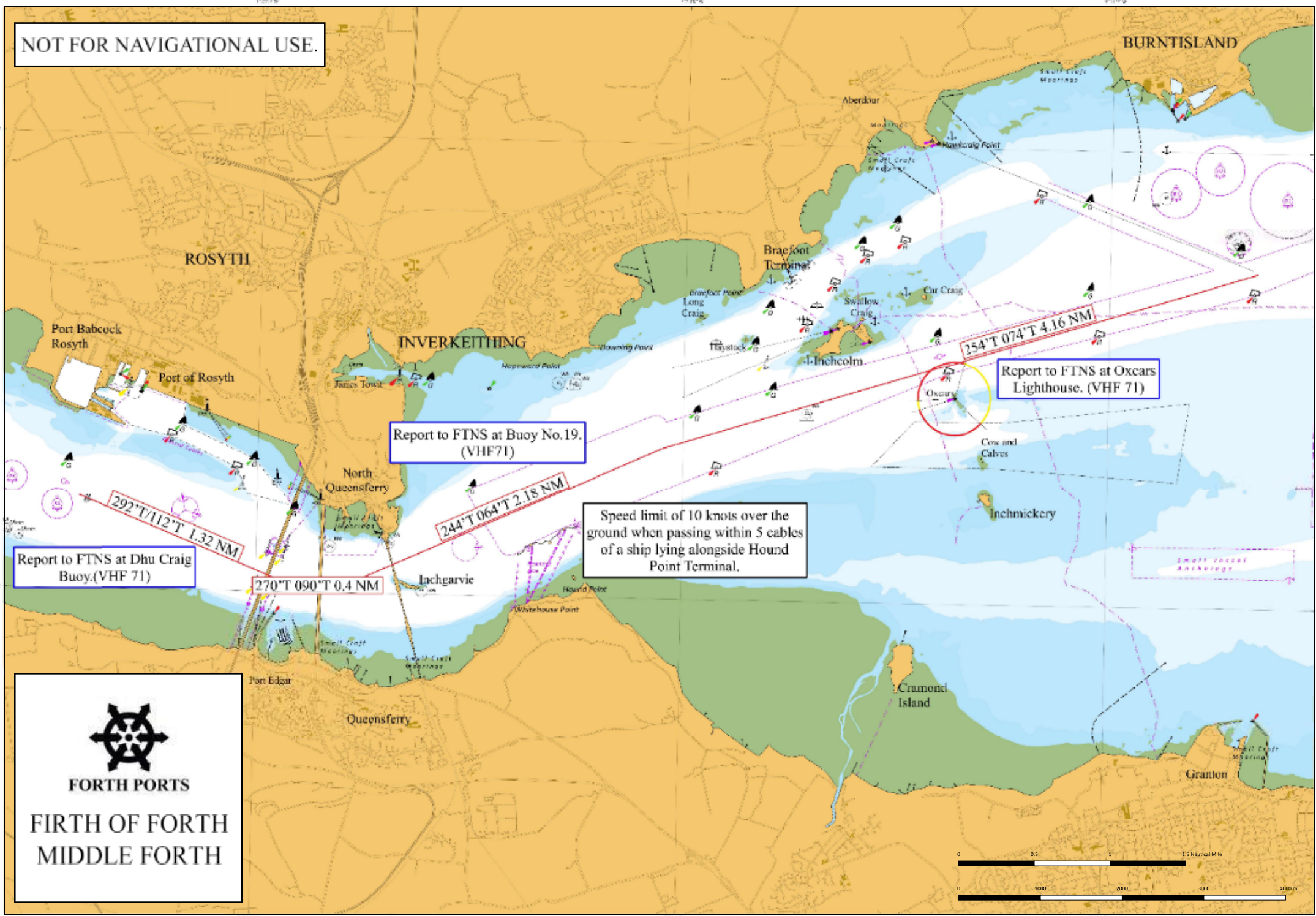


**FORTH PORTS**  
**FIRTH OF FORTH**  
**OUTER FORTH**



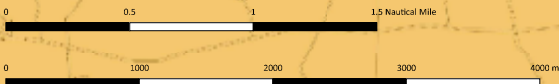


NOT FOR NAVIGATIONAL USE.



**FORTH PORTS**  
FIRTH OF FORTH  
MIDDLE FORTH

NOT FOR NAVIGATIONAL USE.



FORTH PORTS  
FIRTH OF FORTH  
GRANGEMOUTH

Report to Grangemouth Locks at Hen & Chickens Buoy. (VHF 14)

Speed limit of 10 knots over the ground when passing within 5 cables of a ship lying alongside Crombie Pier.

At The Lock Entrance the tide runs 280T on strong floods and 100T on strong ebb tides

270°T/090°T 3.43 NM

Report to FTNS at Crombie Pier. (VHF 71)

288°T/108°T 3.42 NM

304°T/124°T 1.18 NM

GRANGEMOUTH

BONNESS

Charlestown

Lunckilns

Port Bahcock Rosyth

Blackness



BURNTISLAND



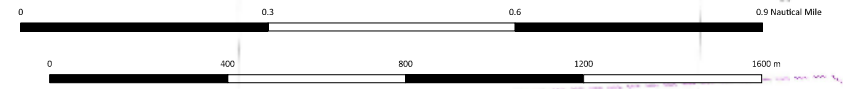
FORTH PORTS  
FIRTH OF FORTH  
BURNTISLAND

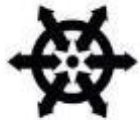
000°T/ 180°T 0.55NM

270°T/ 090°T 1.88NM

Racon(T)

NOT FOR NAVIGATIONAL USE.





FORTH PORTS

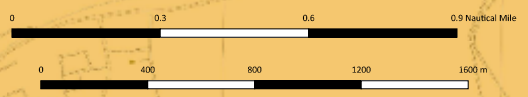
FIRTH OF FORTH  
BRAEFoot  
TERMINAL

Braefoot Terminal



NOT FOR NAVIGATIONAL USE.

BURNTISLAND



Strong Tides Between  
Buoys No.5 and No.6

247°T /067°T 1.56 NM

292°T /112°T 1.65 NM

243°T /063°T 0.77 NM

Route for West Jetty

030°T /210°T 0.64 NM

246°T /066°T 0.68 NM

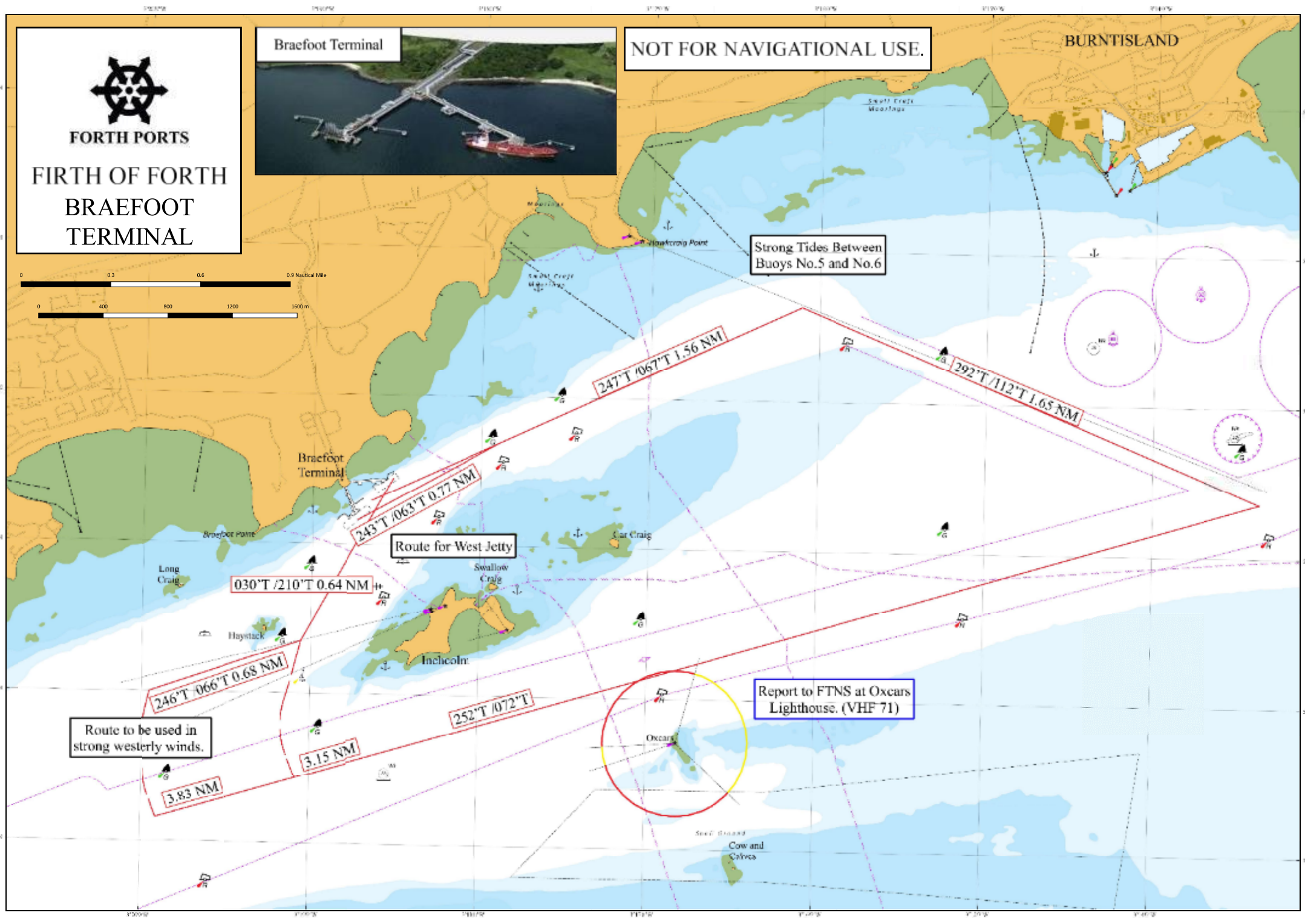
Route to be used in  
strong westerly winds.

3.83 NM

3.15 NM

252°T /072°T

Report to FTNS at Oxcars  
Lighthouse. (VHF 71)

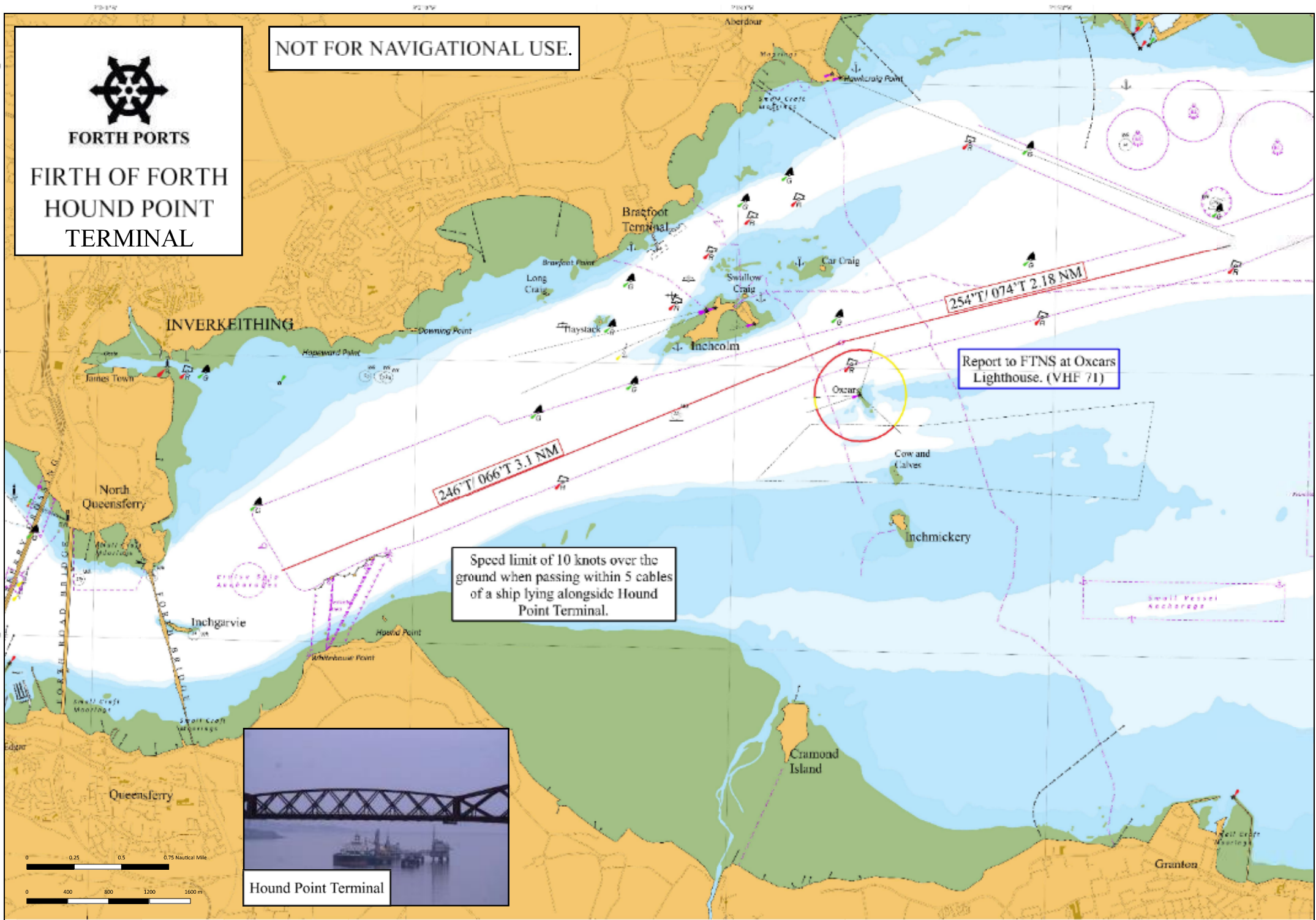






**FORTH PORTS**  
**FIRTH OF FORTH**  
**HOUND POINT**  
**TERMINAL**

NOT FOR NAVIGATIONAL USE.



Hound Point Terminal





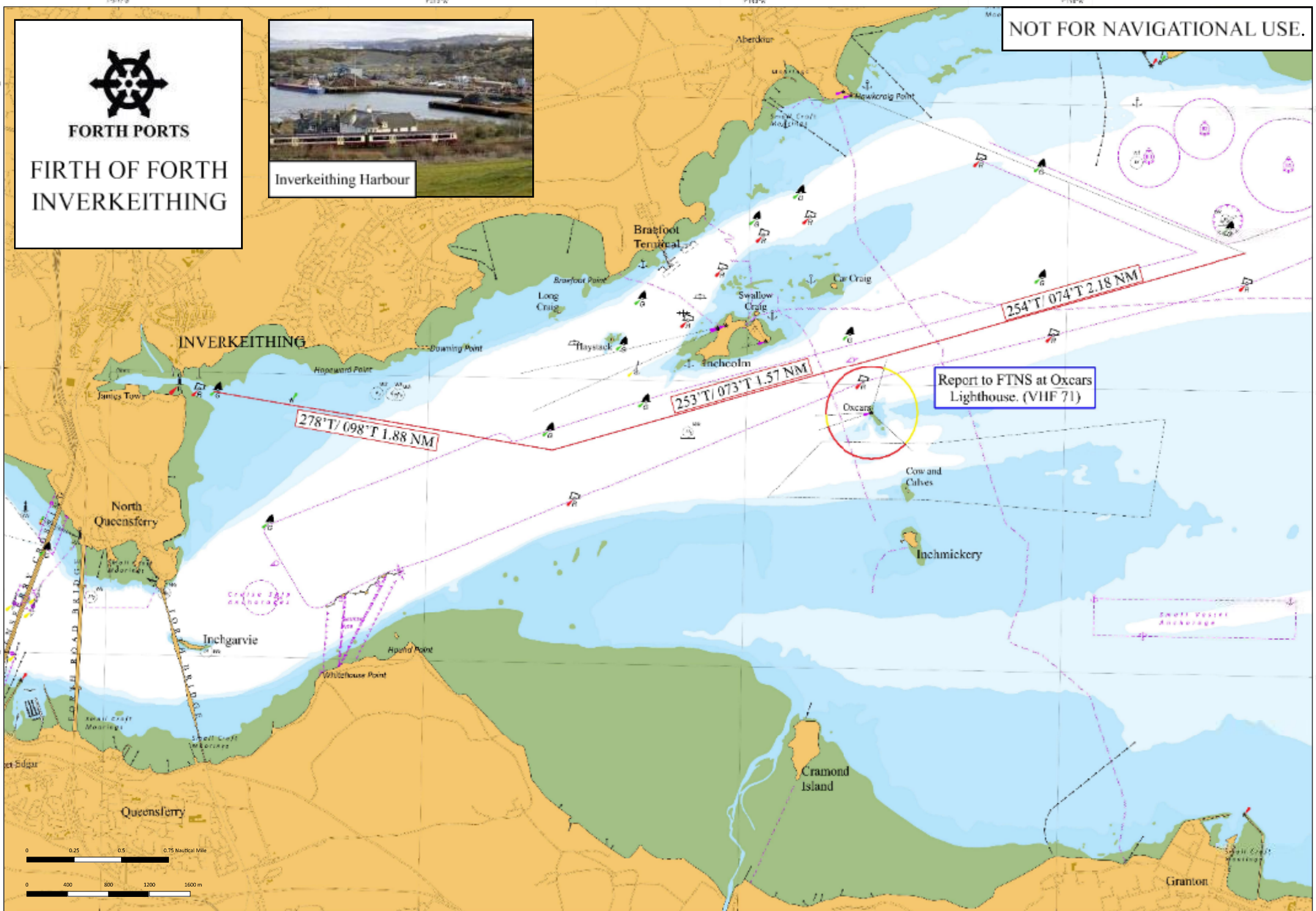
FORTH PORTS

FIRTH OF FORTH  
INVERKEITHING



Inverkeithing Harbour

NOT FOR NAVIGATIONAL USE.





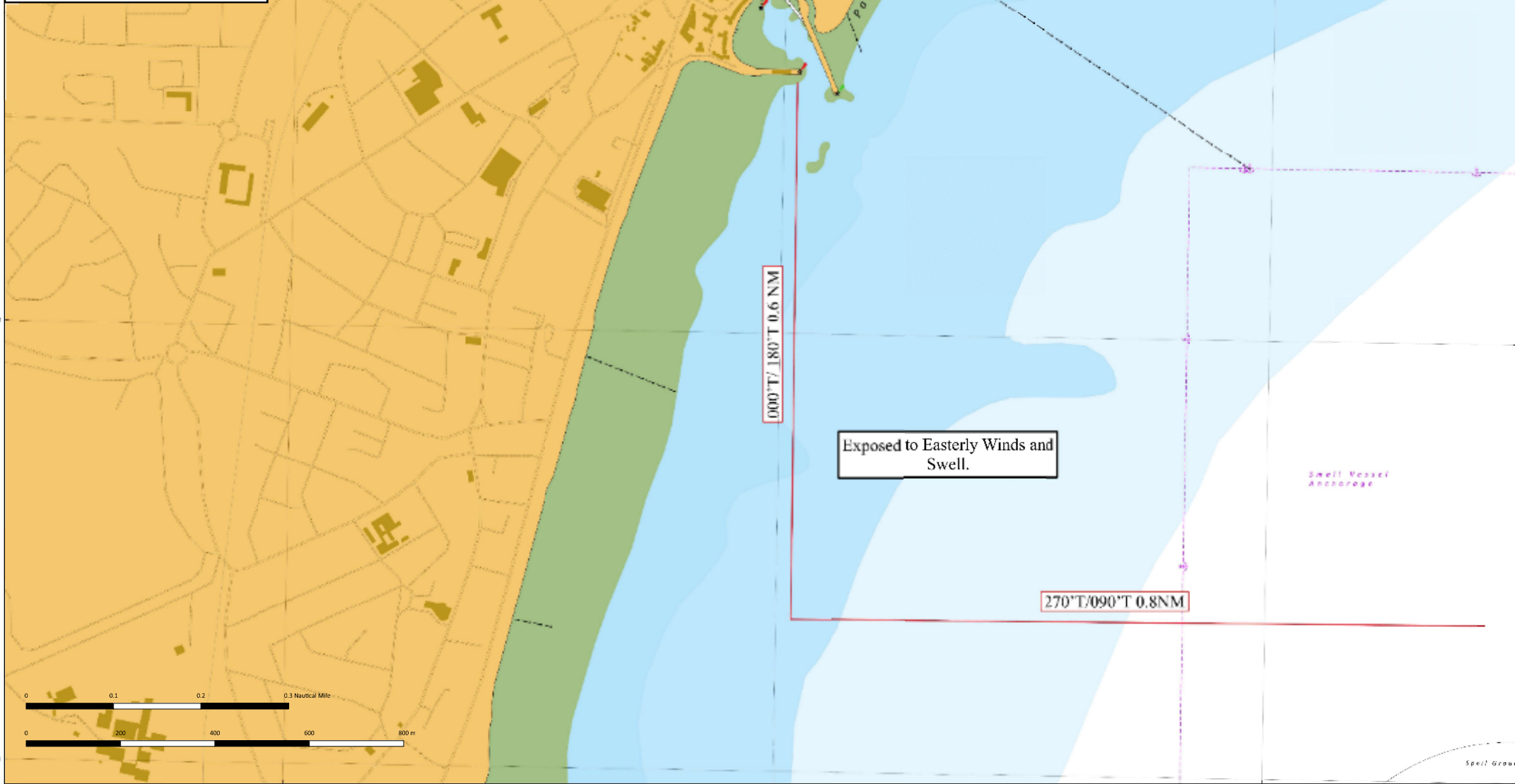
FORTH PORTS

FIRTH OF FORTH  
KIRKCALDY



Kirkcaldy Harbour

NOT FOR NAVIGATIONAL USE.



NOT FOR NAVIGATIONAL USE.

Report to FTNS at Fairway Buoy (VHF 71)

Racon(T)

Racon(T)

Report to FTNS due south of Incheith Island. (VHF 71)

231°T/051°T 1.85 NM

238°T/058°T 3.3 NM

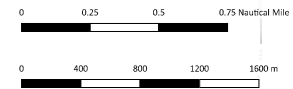
270°T/090°T 2.64 NM

000°T/180°T 0.56 NM


Report to Leith Harbour (VHF 12) & FTNS. (VHF 71)

Be aware of set due to fresh water.

At The Lock Entrance the tide runs 270T on strong floods and 080T on strong ebb tides. Note: Counter water movement on strong flood tide.



Port of Leith



**FORTH PORTS**  
**FIRTH OF FORTH**  
**LEITH**





FORTH PORTS

FIRTH OF FORTH  
METHIL

NOT FOR NAVIGATIONAL USE.

METHIL

000°T/180°T 0.48 NM

298°T/118°T 0.32 NM

270°T/090°T 0.62 NM

Small Vessel  
Discharge

0 0.1 0.2 0.3 Nautical Mile

0 200 400 600 800 m

NOT FOR NAVIGATIONAL USE.

Port Babcock  
Rosyth

Marine activities  
enquiries or requests of  
information should be  
directed to the Port  
Babcock (Rosyth) Ltd



Port of Rosyth



FORTH PORTS  
FIRTH OF FORTH  
ROSYTH

Rosyth Small Boat Channel can be  
used in south-westerly strong winds  
on small cargo vessels on departure  
subject to draft and A/W Periods)

Report to FTNS at Dhu Craig  
Buoy. (VHF 71)

222°T/042°T 0.52 NM

294°T/114°T 0.96 NM

323.5°T/149.5°T 0.8 NM

292°T/112°T 1.32 NM

270°T / 090°T 0.52 NM

WHALE BACK

North  
Queensferry

Small Boat  
Mooring

0 0.25 0.5 0.75 Nautical Mile

0 400 800 1200 1600m