

# RIVER TAY

## PASSAGE PLAN



FORTH PORTS LIMITED



INWARD AND OUTWARD PASSAGE PLAN FOR THE RIVER TAY WITHIN THE PORT OF DUNDEE PILOTAGE AREA.

*This plan has been prepared with the co-operation of personel from The Association of Dundee Pilots and Forth Ports Limited.*

**NOT TO BE USED FOR NAVIGATION.**

FOR COMPULSORY PILOTAGE AREAS SEE PILOTAGE DIRECTION NO.3.

LEGISLATION , PROCEDURES AND GUIDELINES ARE AVAILABLE ONLINE AT : [HTTP://WWW.FORTHPORTS.CO.UK/MARINE/](http://www.forthports.co.uk/marine/)

THIS IS A GENERAL PASSAGE PLAN FOR ROUTEING TO THE PORT OF DUNDEE.

CONTACT INFORMATION:

⚓ DUNDEE HARBOUR VHF CHANNEL 12  
 ⚓ PILOT BOAT VHF CHANNEL 12

TELEPHONE :

⚓ FORTH AND TAY NAVIGATION SERVICE +44(0)1324 498584

ADDRESS:

FORTH & TAY NAVIGATION SERVICE (FTNS)

GRANGEMOUTH PORT OFFICE

GRANGEMOUTH

FK3 8UE



FORTH PORTS LIMITED

THE PASSAGE PLANS CONTAINED IN THIS BOOKLET ARE MERELY A RECOMMENDATION OF THE PREFERRED ROUTE TO BE TAKEN BY VESSELS WHEN NAVIGATING IN THE INDICATED AREAS. ANY PILOT OR MASTER SHOULD EXERCISE THEIR OWN DISCRETION AND BE PREPARED TO DEPART FROM THE PASSAGE PLAN WHEN CIRCUMSTANCES DICTATE. FORTH PORTS LTD SHALL NOT BE LIABLE FOR ANY LOSSES, LIABILITIES OR DAMAGES ARISING WHETHER OR NOT DUE TO ANY FORM OF RELIANCE ON OR USAGE OF ANY PASSAGE PLAN OR DEVIATION THEREOF.

© BRITISH CROWN COPYRIGHT 2014. ALL RIGHTS RESERVED.

NOT TO BE USED FOR NAVIGATION

FORTH PORTS LIMITED	Document ID FP PMSC F 17/04	Authorised By HM	Original Date April 2015
Dundee Passage Plan	Date Revised August 2022	Revised By MMD	Review Due August 2024

UK HYDROGRAPHIC OFFICE MAKES THE ACCOMPANYING PDF FORMAT IMAGES OF ADMIRALTY CHARTS 728, 733, 734, 736, 737, 741 AND 1481 AVAILABLE TO FORTH PORTS LIMITED IN ACCORDANCE WITH THE TERMS AND CONDITIONS OF LICENCE 17566.

THE DATA IS SUPPLIED UNDER THE CONDITIONS SHOWN BELOW.

### CONDITIONS OF RELEASE

THE SUPPLIED MATERIAL IS PROTECTED BY CROWN COPYRIGHT. NO PART OF THE SUPPLIED MATERIAL MAY BE REPRODUCED, STORED IN A RETRIEVAL SYSTEM OR TRANSMITTED IN ANY FORM OR BY ANY MEANS, ELECTRONIC, MECHANICAL, PHOTOCOPYING, RECORDING OR OTHERWISE EXCEPT AS REQUIRED TO FULFIL THE PURPOSE ABOVE.

THE COPYRIGHT MATERIAL, ITS DERIVATIVES AND ITS OUTPUTS MAY NOT TO BE SOLD OR DISTRIBUTED OR COMMERCIALY EXPLOITED IN EITHER AN ORIGINAL OR DERIVED FORM WITHOUT THE PRIOR WRITTEN PERMISSION OF THE UK HYDROGRAPHIC OFFICE.

FOR THE AVOIDANCE OF DOUBT, THE RECIPIENT SHALL NOT PLACE OR PERMIT TO BE PLACED THE SUPPLIED MATERIAL, ITS DERIVATIVES AND ITS OUTPUTS ON A COMPUTER ACCESSIBLE TO THIRD PARTIES WHETHER VIA THE INTERNET OR OTHERWISE.

THE RELEASE OF THE SUPPLIED MATERIAL IN NO WAY IMPLIES THAT THE UK HYDROGRAPHIC OFFICE WILL SUPPLY FURTHER MATERIAL OR OFFER AN EXTENSION TO THIS LICENCE AGREEMENT.

### DISCLAIMER

WHILST THE UK HYDROGRAPHIC OFFICE HAS ENDEAVOURED TO ENSURE THAT THE MATERIAL SUPPLIED IS SUITABLE FOR THE PURPOSE, IT ACCEPTS NO LIABILITY (TO THE MAXIMUM EXTENT PERMITTED BY LAW) FOR ANY DAMAGE OR LOSS OF ANY NATURE ARISING FROM ITS USE. THE MATERIAL SUPPLIED IS USED ENTIRELY AT THE RECIPIENT'S OWN RISK.

THE COMPULSORY PILOTAGE AREAS ON THE FIRTH OF TAY EXTEND FROM AN EASTERN SEAWARD LIMIT DELINEATED BY A LINE EXTENDING FROM: 56° 29'N 2 38'W AND SOUTHWARDS TO ITS INTERSECTION WITH THE LINE OF LATITUDE 56° 26'N. THEN WESTWARDS ON THE NORTH SIDE ON 56° 29'N TO THE LINE OF MHWS AT BUDDON NESS THEREOF WESTWARDS ON THE NORTH SIDE OF THE RIVER TAY PAST DUNDEE ALONG THE LINE OF MHWS TO THE RIVULET CALLED BURNMOUTH OF INVERGOWRIE. WESTWARDS ON THE SOUTH SIDE OF THE RIVER TAY PAST DUNDEE TO THE PLACE WHERE THE MONASTERY OF BALMERINO WAS SITUATED. THE WESTERN LIMIT IS DEFINED AS A LINE DRAWN FROM THE AFOREMENTIONED LIMIT ON THE NORTH OF THE RIVER TO THE SOUTHERN LIMIT.

FORTH PORTS LIMITED	Document ID FP PMSC F 17/04	Authorised By HM	Original Date April 2015
Dundee Passage Plan	Date Revised August 2022	Revised By MMD	Review Due August 2024

SHIPS EXEMPTED FROM COMPULSORY PILOTAGE ARE;

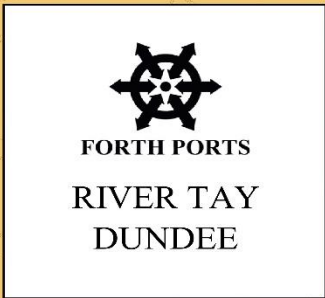
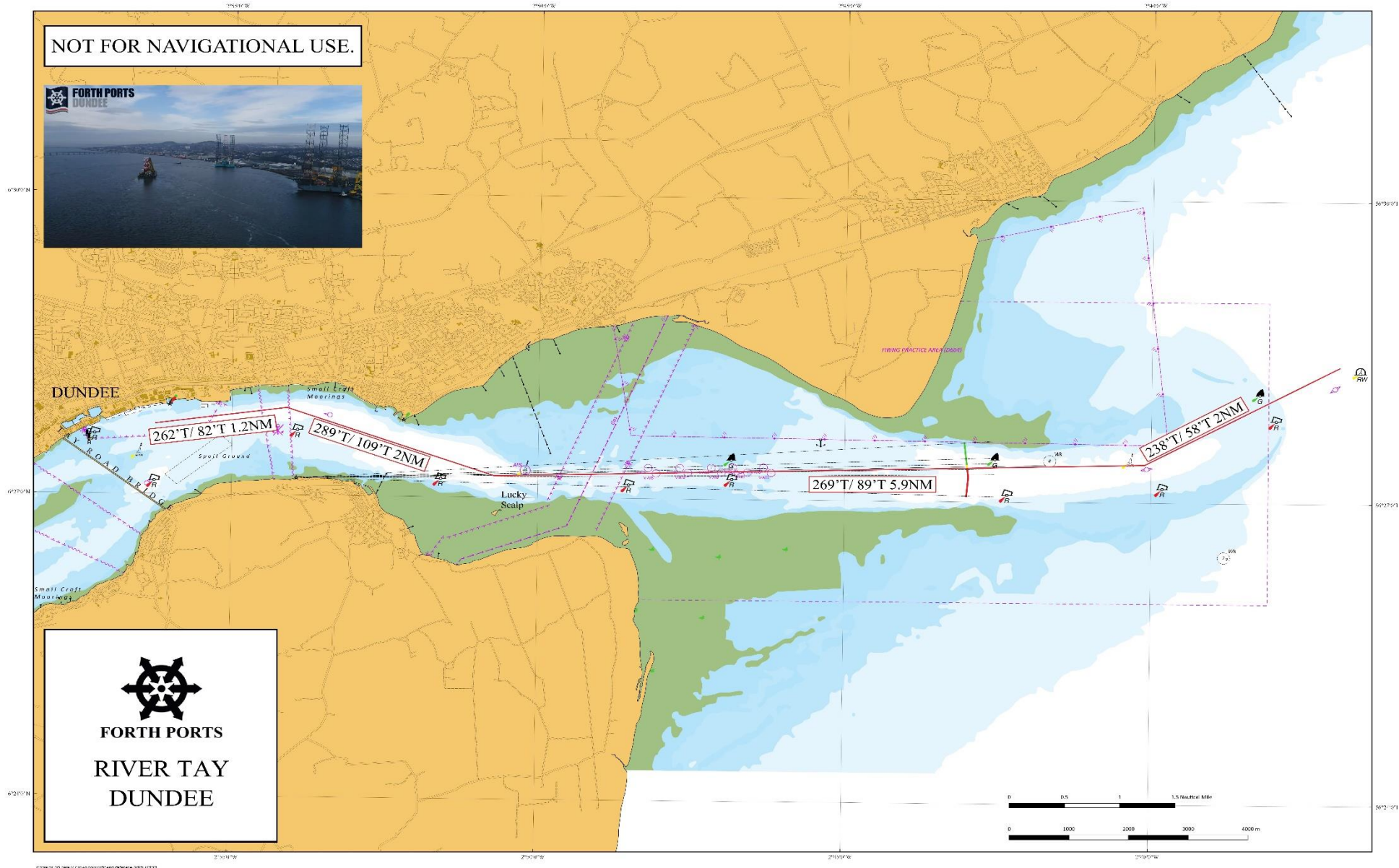
- A) ALL SHIPS OF LESS THAN 40 METERS IN LENGTH;
- B) ALL FISHING BOATS AND SAILING YACHTS WITH A REGISTERED LENGTH OF LESS THAN 47.5M
- C) ALL SHIPS UNDER CONTROL OF A COMPETENT PERSON WHO IS IN POSSESSION OF A VALID PILOTAGE EXEMPTION CERTIFICATE;
- D) ALL SHIPS ENGAGED IN THE MAINTENANCE OF NAVIGATION AIDS
- E) ALL SHIPS ENGAGED IN DREDGING ACTIVITIES OR INVOLVED IN CIVIL ENGINEERING OPERATIONS OR ANTI-POLLUTION ACTIVITIES <85M IN LENGTH
- F) H.M NAVAL VESSELS.



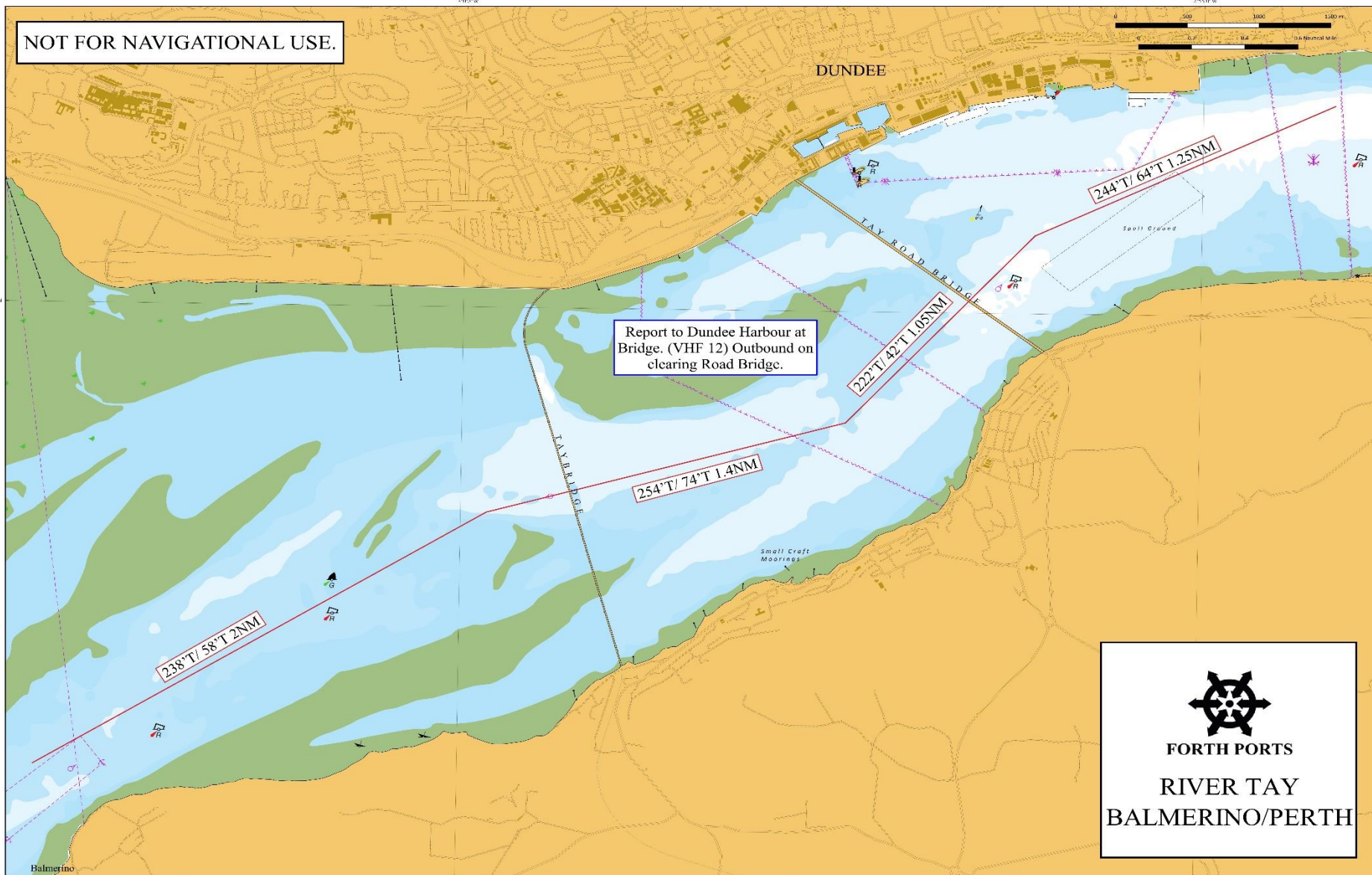
FORTH PORTS LIMITED

FORTH PORTS LIMITED	Document ID FP PMSC F 17/04	Authorised By HM	Original Date April 2015
Dundee Passage Plan	Date Revised August 2022	Revised By MMD	Review Due August 2024

NOT FOR NAVIGATIONAL USE.



<b>FORTH PORTS LIMITED</b>	<b>Document ID</b> FP PMSC F 17/04	<b>Authorised By</b> HM	<b>Original Date</b> April 2015
<b>Dundee Passage Plan</b>	<b>Date Revised</b> August 2022	<b>Revised By</b> MMD	<b>Review Due</b> August 2024



<b>FORTH PORTS LIMITED</b>	<b>Document ID</b> FP PMSC F 17/04	<b>Authorised By</b> HM	<b>Original Date</b> April 2015
<b>Dundee Passage Plan</b>	<b>Date Revised</b> August 2022	<b>Revised By</b> MMD	<b>Review Due</b> August 2024