

# RORO KNOW-HOW

Providing strategic ferry connections for London, the South East and Scotland

Our modern terminals connect the UK directly with Europe, Scandinavia, and Africa enabling growth in the shipment of containers, trailers, trade cars, machinery and project cargo.

- **PORT OF TILBURY**
- **TILBURY2**
- **FORTH PORTS ROSYTH**



Expertise delivering flexible and efficient cargo handling services



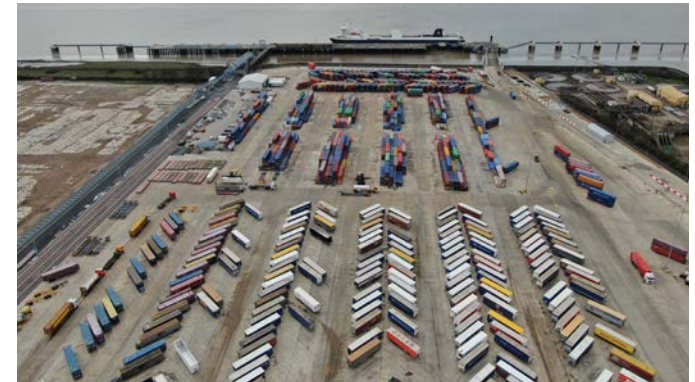
**With expertise in Roll-on Roll-off solutions, Forth Ports Ltd provides efficient and reliable turnaround for a range of cargos**

## RoRo Freight Service Information

- Tilbury hosts regular freight RoRo services to Europe including, two daily services from Zeebrugge for P&O, a bi-weekly service serving Scandinavia and weekly calls from Africa
- £250m investment in a brand new 152 acre port at Tilbury2 has added 500k units of freight capacity to the UK market
- Tilbury2 services 600 truck movements per day and delivers consistent <25 min turnaround times
- Cargo handling expertise for containers, trailers and project cargo
- Bespoke storage and consolidation (open storage and warehousing)
- Secure site with security personnel, CCTV and onsite Crown Police Force
- A range of 3rd party logistics providers are based onsite including transport, forwarding and agency
- Automated booking systems & online unit tracking search
- 5 million sq ft of bonded and temperature controlled warehouse onsite at Tilbury
- Brand-new 12 bay Border Control Post (BCP) and customs facilities based onsite
- System processes available to support customs clearances
- 24 hour booking/collection services
- Lashing and securing services plus dangerous goods handling (class 1 and 7)
- Easy access to the M25 and 18 million people within 75 miles

## RoRo Berth Information

- 3 Thames River Berths – accommodate post-panamax vessels with a beam over 35m
- 6 Inner Tilbury Dock Berths – accommodate panamax vessels
- Max Vessel Dimensions for Lock Entry: 262m LOA, 32m beam and 10.4m depth
- 1 Forth Estuary Berth – Ruling depth 7.8m. Max length 195m, consult Harbour Master for vessels in excess of this figure



AEO APPROVED PORT  
ISPS ACCREDITED FACILITIES  
CROWN POLICE LOCATED ON SITE



For most up-to-date version of this information, scan the QR code below.

**Location is Quay – Our terminals are strategically positioned to serve UK freight ferry routes**

**CONTACT:**  
info@potll.com  
marketing@forthports.co.uk

