

# FORTH PORTS LIMITED

NtM No 78 of 2024

6<sup>th</sup> September 2024

## NOTICE TO MARINERS

### FIRTH OF FORTH

#### Forth Estuary – Outfalls – Diving Operations

Mariners are advised that commencing on the 7<sup>th</sup> September @ 0800, until 14<sup>th</sup> September @ 2000, diving operations will be taking place in vicinity of the below outfalls (see below table and diagrams)

The diving operations will be supported by the dive support vessel “Teal of Wick” – a 18.25m blue and white catamaran workboat.

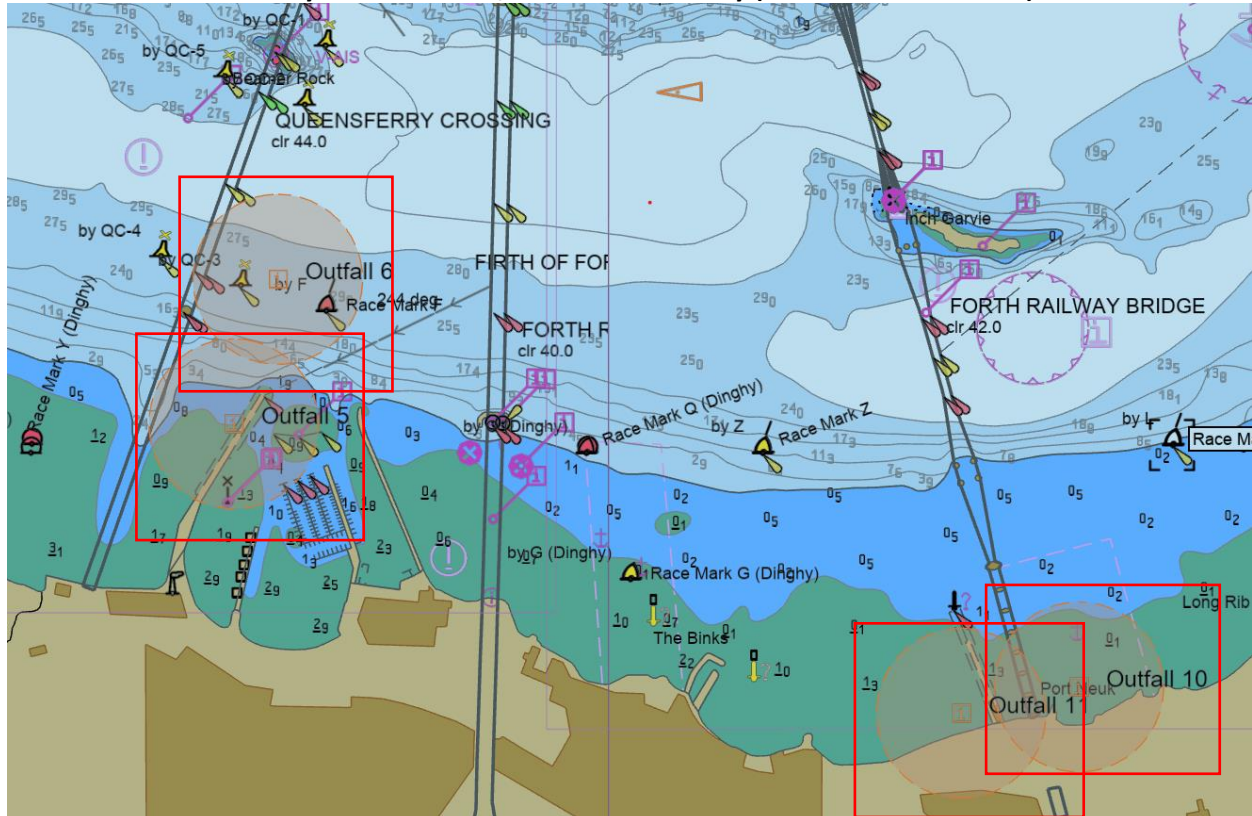
Vessels are requested to navigate with caution and at a safe speed in the vicinity of the operation which requires an exclusion zone of 200m.

During the diving operation the “Teal of Wick” will display shapes and lights as required by International Regulations, will advise Forth Navigation of all movements and will maintain a listening watch on VHF channel 71 and 16.

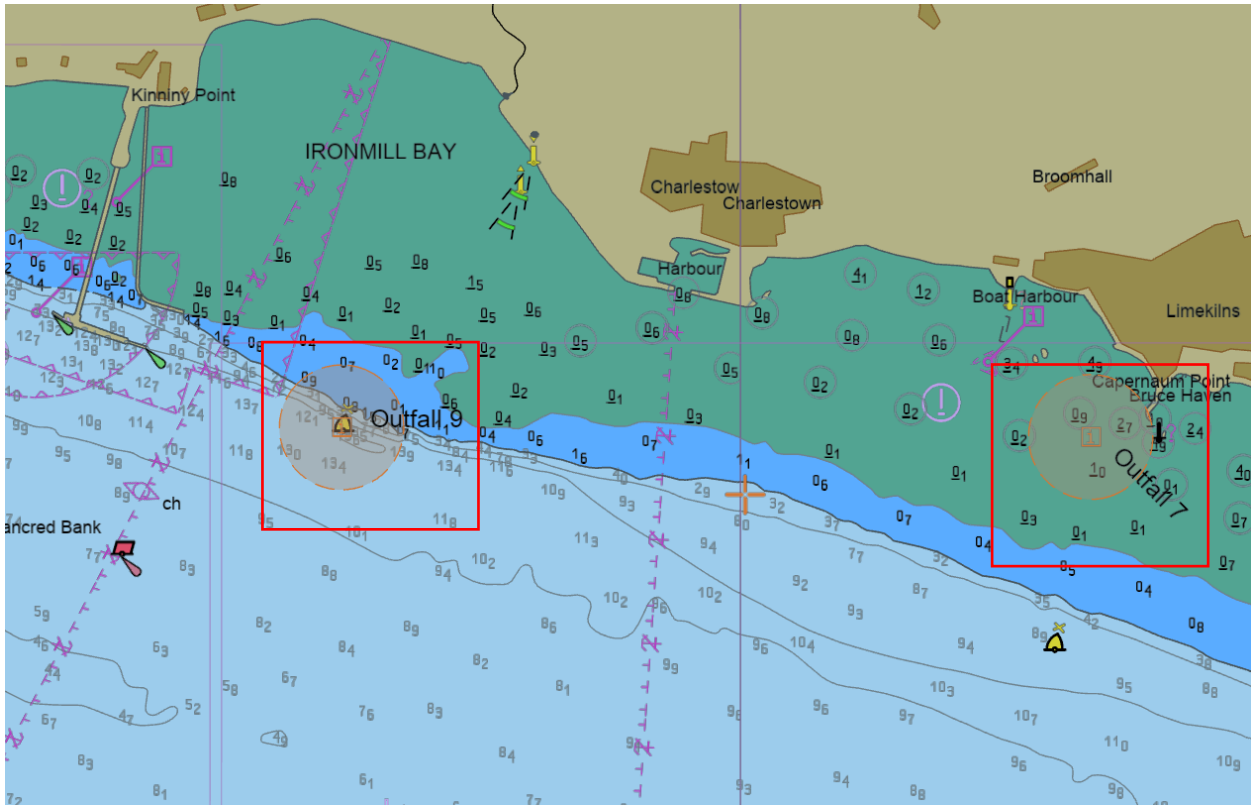
#### Location of Outfalls

ID (See Chartlets)	OUTFALL NAME	Vicinity of	Degs, Min, Secs	Decimal
1	Gullane WWTW 1950	Gullane	56°01'59"N , 002°53'17"W	56.03305 , -2.88805
2	Longniddry WPS 2004	Longniddry	55°59'15"N , 002°54'12"W	55.9875 , -2.90333
3	Prestonpans WWPS CSO	Prestonpans	55°57'23"N , 002°59'55"W	55.95638 , -2.99861
4	Trinity SPS CSO	Wardie Bay	55°58'56"N , 003°12'22"W	55.98222 , -3.20611
5	South Queensferry STW CSO	Port Edgar	55°59'49"N , 003°24'51"W	55.99694 , -3.41416
6	Port Edgar WWTW	Port Edgar	56°00'00"N , 003°24'45"W	56 , -3.4125
7	Limekilns SEP	Limekilns	56°01'47"N , 003°28'55"W	56.02972 , -3.48194
8	East Wemyss WWTW	East Wemyss	56°09'32"N , 003°03'39"W	56.15888 , -3.06083
9	Iron Mill Bay WWTW	Crombie	56°01'48"N , 003°31'14"W	56.03 , -3.52055
10	Unharted Outfall	South Queensferry	55°59'29"N , 003°22'56"W	55.99138 , -3.38222
11	South Queensferry Hawes Pier	South Queensferry	55°59'27"N , 003°23'12"W	55.99083 , -3.38666

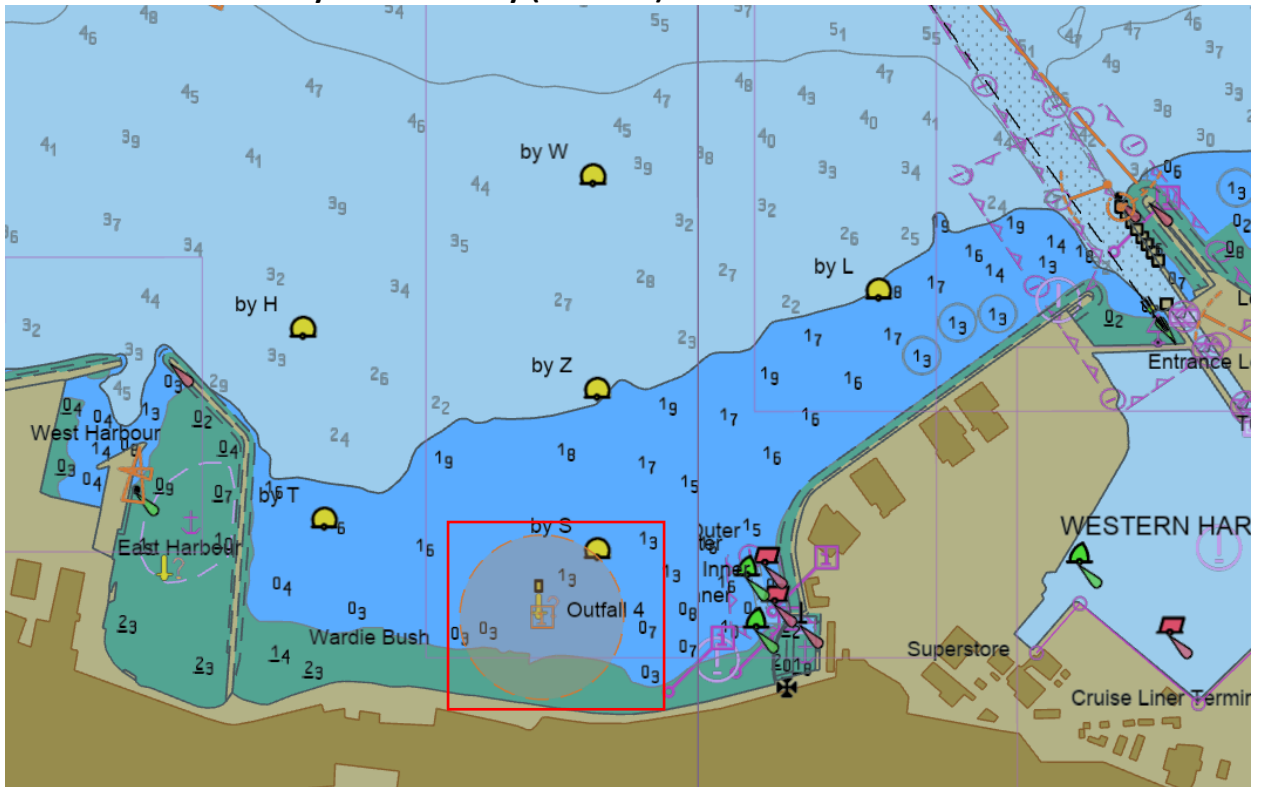
#### Plan of outfalls in Vicinity of Hawes Pier / South Queensferry (Outfalls 5 – 6 – 10 -11)



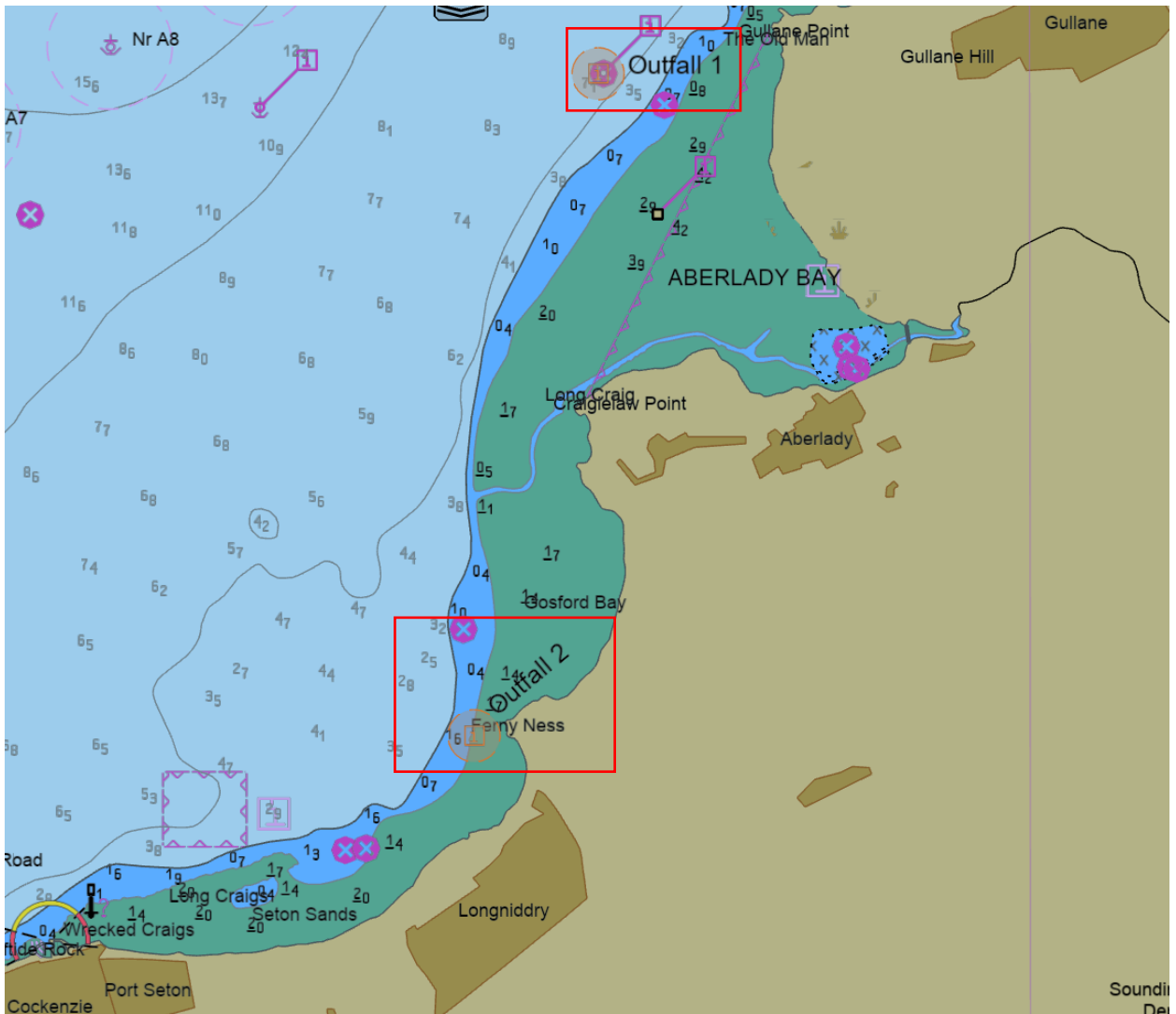
**Plan of outfalls in Vicinity of Crombie / Limekilns (Outfalls 7 + 9)**



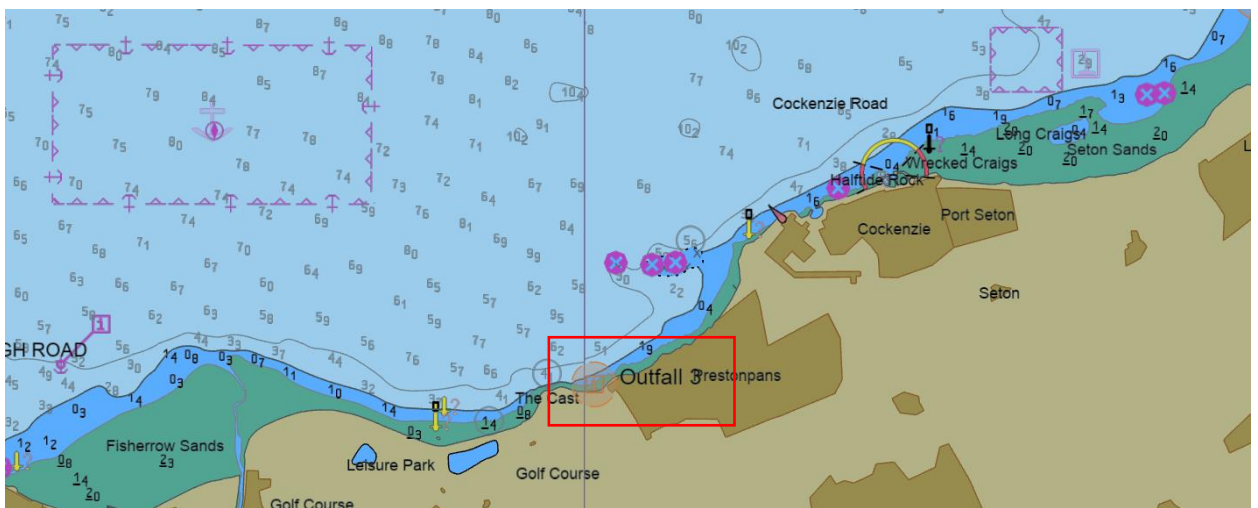
**Plan of outfall in vicinity of Wardie Bay (Outfall 4)**



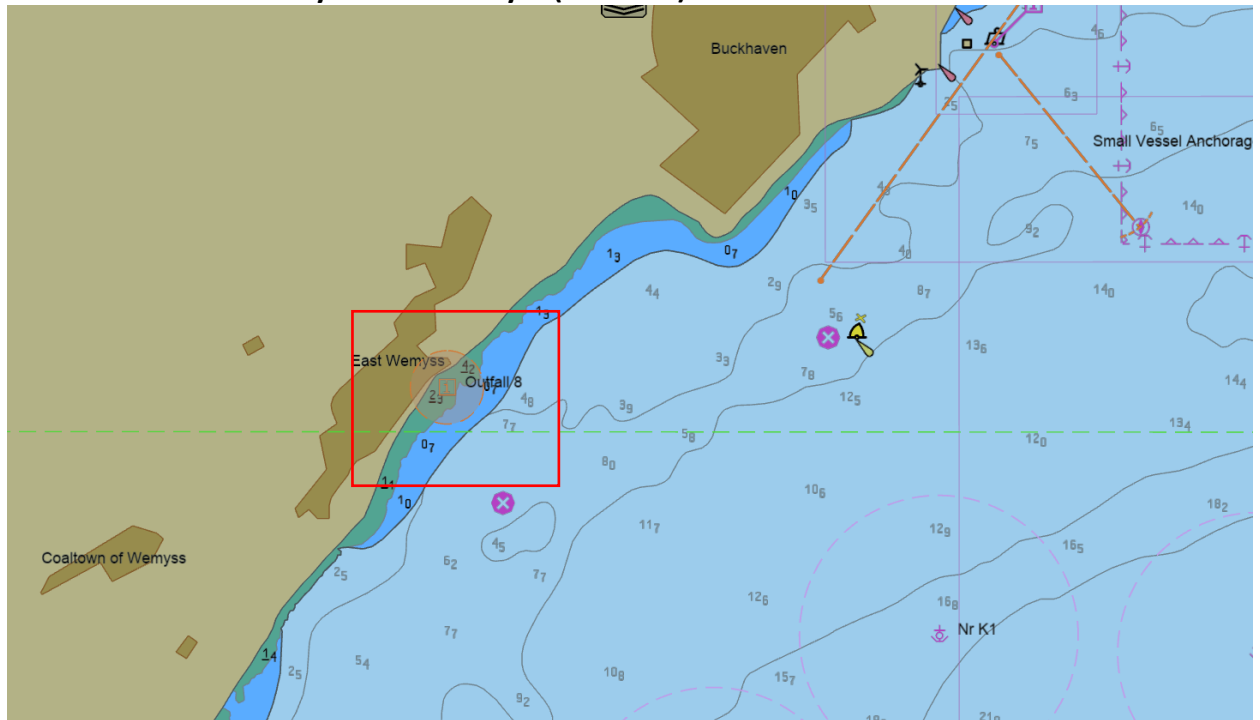
### Plan of outfalls in vicinity of Gullane and Longniddry (Outfall 1 + 2)



### Plan of outfall in vicinity of Prestonpans (Outfall 3)



## Plan of outfall in vicinity of East Wemyss (Outfall 8)



### Status of previously published notices:

Nos 08, 09 and 22 of 2023 remain in force,  
Nos 01, 25, 28, 51, 53, 63, 73, 76 and 77 of 2024 remain in force.

Issued by:

**Colin Campbell**

**Marine Compliance Manager**