

# FORTH PORTS - Port of Tilbury

## Appendix C: Tilbury Landing Stage bunkering/oily waste discharge spill mat instructions

<b>FORTH PORTS LIMITED</b>	<b>Document ID</b> POTLL PMSC OP 16_01	<b>Authorised By</b> Asset Manager Marine	<b>Original Date</b> March 2025
<b>Bunkering Procedure Tilbury</b>	<b>Date Revised</b>	<b>Revised By</b> Asset Manager Marine	<b>Review Due</b> March 2027

## 1. General Requirements

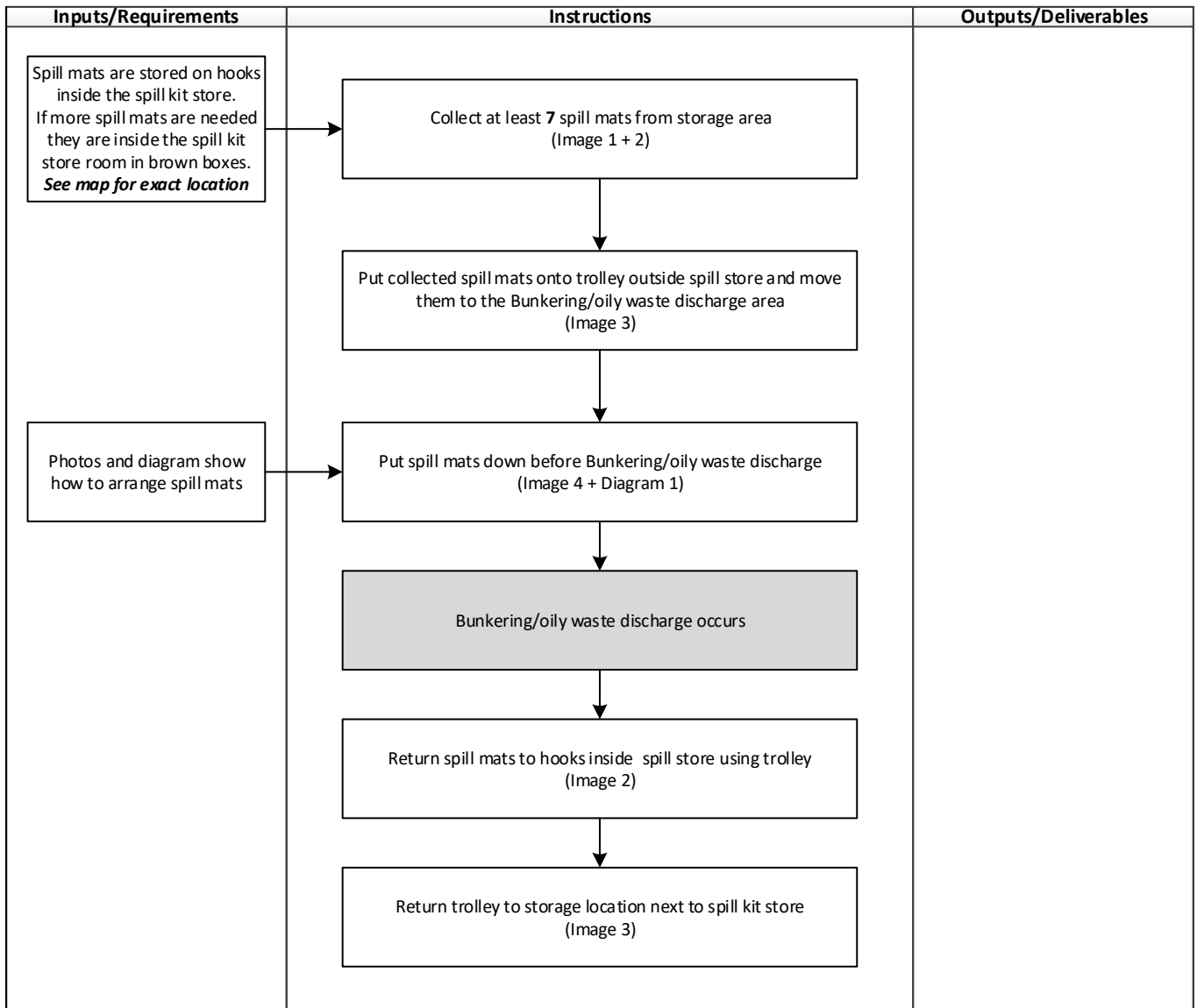
This document provides instructions for using spill mats and is only applicable for bunkering or discharging oily waste at the Tilbury Landing Stage.

The [Bunkering and Oily Waste Discharge procedure for the Port of Tilbury](#) must be followed during bunkering and oily waste discharge.

Prior to conducting any bunkering and/or oily waste discharge at the Tilbury Landing Stage, the Marine Asset must provide approval. It is also the responsibility of the Master to notify the Port of London VTS.

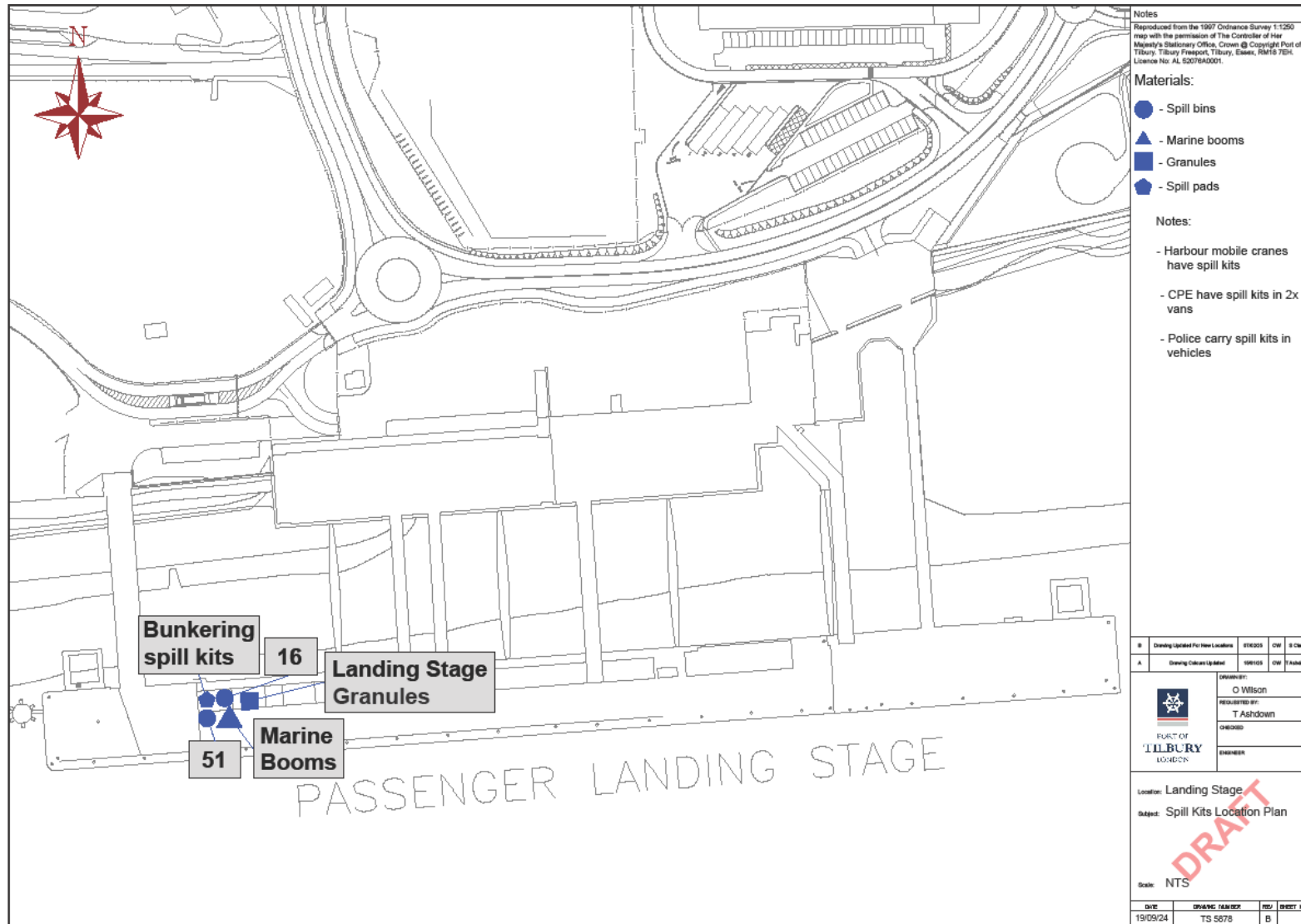
Refer to the [Bunkering and Oily Waste Discharge procedure for the Port of Tilbury](#) for all bunkering and oily discharge requirements and contact details.

## 2. Instructions



<b>FORTH PORTS LIMITED</b>	<b>Document ID</b> POTLL PMSC OP 16_01	<b>Authorised By</b> Asset Manager Marine	<b>Original Date</b> March 2025
<b>Bunkering Procedure Tilbury</b>	<b>Date Revised</b>	<b>Revised By</b> Asset Manager Marine	<b>Review Due</b> March 2027

### 3. Landing Stage Spill Mats and Spill Materials Map



<b>FORTH PORTS LIMITED</b>	<b>Document ID</b> POTLL PMSC OP 16_01	<b>Authorised By</b> Asset Manager Marine	<b>Original Date</b> March 2025
<b>Bunkering Procedure Tilbury</b>	<b>Date Revised</b>	<b>Revised By</b> Asset Manager Marine	<b>Review Due</b> March 2027

#### 4. Spill Mat Images and Diagram

Image 1: Spill store



Image 2: Spill mat storage hooks



Spill mat hooks

Additional spill mats

<b>FORTH PORTS LIMITED</b>	<b>Document ID</b> POTLL PMSC OP 16_01	<b>Authorised By</b> Asset Manager Marine	<b>Original Date</b> March 2025
<b>Bunkering Procedure Tilbury</b>	<b>Date Revised</b>	<b>Revised By</b> Asset Manager Marine	<b>Review Due</b> March 2027

Image 3: Trolley location



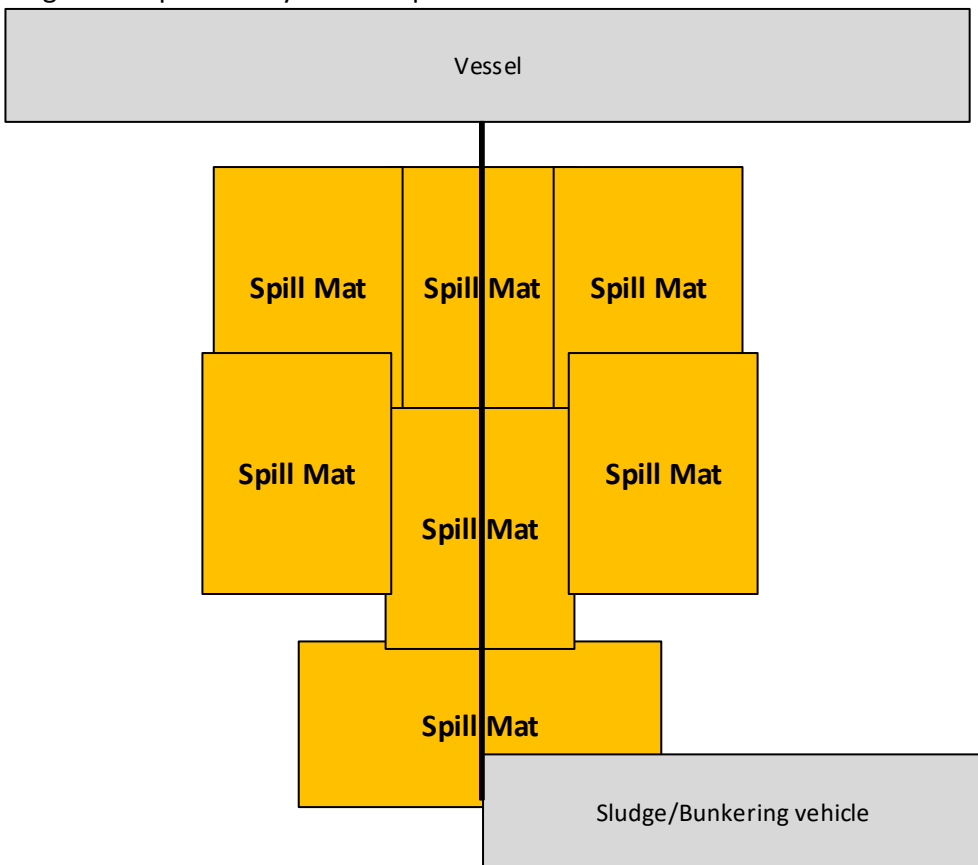
<b>FORTH PORTS LIMITED</b>	<b>Document ID</b> POTLL PMSC OP 16_01	<b>Authorised By</b> Asset Manager Marine	<b>Original Date</b> March 2025
<b>Bunkering Procedure Tilbury</b>	<b>Date Revised</b>	<b>Revised By</b> Asset Manager Marine	<b>Review Due</b> March 2027

Image 4: Spill mat layout example



<b>FORTH PORTS LIMITED</b>	<b>Document ID</b> POTLL PMSC OP 16_01	<b>Authorised By</b> Asset Manager Marine	<b>Original Date</b> March 2025
<b>Bunkering Procedure Tilbury</b>	<b>Date Revised</b>	<b>Revised By</b> Asset Manager Marine	<b>Review Due</b> March 2027

Diagram 1: Spill mat layout example



<b>FORTH PORTS LIMITED</b>	<b>Document ID</b> POTLL PMSC OP 16_01	<b>Authorised By</b> Asset Manager Marine	<b>Original Date</b> March 2025
<b>Bunkering Procedure Tilbury</b>	<b>Date Revised</b>	<b>Revised By</b> Asset Manager Marine	<b>Review Due</b> March 2027