

FORTH PORTS LIMITED

NtM No 51 of 2025

16th April 2025

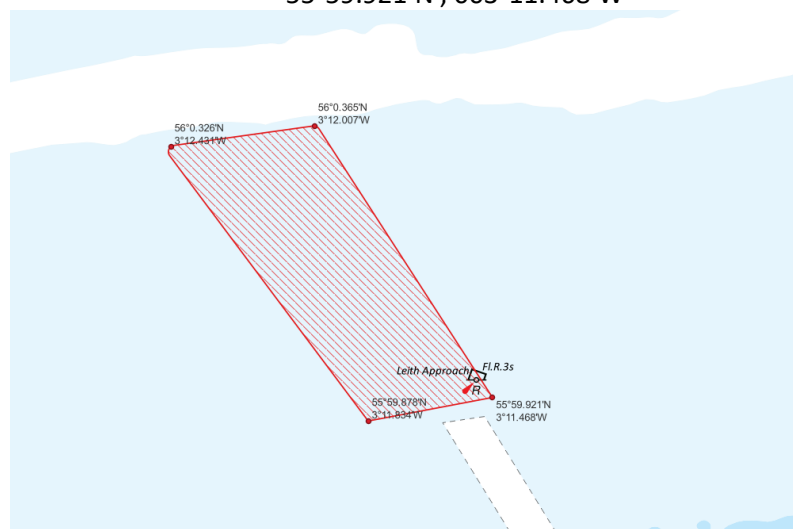
NOTICE TO MARINERS

FIRTH OF FORTH

Leith Approaches Seabed Exclusion Zone

Mariners are advised that a seabed exclusion zone is now in place within the following coordinates

- 56°00.326'N , 003°12.431'W
- 56°00.365'N , 003°12.007'W
- 55°59.878'N , 003°11.834'W
- 55°59.921'N , 003°11.468'W



No Anchoring, Dredging, Fishing or any other operation involving disturbance of the seabed is permitted within this area.

This seabed exclusion zone does not apply to surface navigation.

Status of previously published notices:

Nos 53, 73, and 116 of 2024 remain in force

Nos 10, 14, 19, 21, 36, 37, 44, 48, 49 and 50 of 2025 remain in force.

Issued by:

Michael Gibson

Marine Manager